

National RE Updates for SACRE from RE Today

Autumn 2025 for Herefordshire SACRE

Examination Results 2025

Summer 2025 saw, as always, excited and nervous 16- and 18-year-olds expecting the results of the GCSE and A Level Religious Studies examinations. There was a slight decrease in the number of A Level entries in England, Wales and Northern Ireland for 2025 with the subject being studied by more girls than boys in this cohort.

The full report and analysis from NATRE/RE Today is available to download here:

www.natre.org.uk/resources/gcse-religious-studies-2025-national-report-for-england-and-wales/

The data below, for A Level Religious Studies is provided by the Joint Council for Qualifications (2024 is included for comparison):

Category	Subject	Year	Number Sat	A* %	A*-A %	A*-B %	A*-C %	A*-D %	A*-E %	A*-U %
A Level UK	Religious Studies	2025	16439	5.9	25.5	56.6	81.2	93.8	98.5	100.0
A Level UK	Religious Studies	2024	16622	6.0	25.7	54.9	78.8	92.6	98.2	100.0

	Subject	Sex	Year	Number sat	% of Total number sat	A* %	A*-A %	A*-B %	A*-C %	A*-D %	A*-E %	A*-U %
A level UK	RS	Male	2025	4703	1.2	6.4	24.6	54.2	79.7	93.1	98.2	100.0
A level UK	RS	Male	2024	4839	1.2	6.1	25.4	53.2	77.1	91.7	97.9	100.0
A level UK	RS	Female	2025	11736	2.5	5.7	25.8	57.5	81.8	94.0	98.6	100.0
A level UK	RS	Female	2024	11783	2.5	6.0	25.8	55.6	79.4	92.9	98.2	100.0

21st August 2025 saw the release of the GCSE results in England, Wales and Northern Ireland. The figures below show the UK wide figures as well as the figures for England, for the whole cohort and also included are the figures according to sex.

GCSE Full Course Religious Studies UK

Category	Subject	Year	Number Sat	7/A and above %	4/C and above %	1/G and above %	U and above %
GCSE UK	Religious Studies	2025	237515	32.1	73.4	97.9	100.0
GCSE UK	Religious Studies	2024	245019	31.4	72.7	98.0	100.0

GCSE Full Course Religious Studies England

Category	Subject	Year	Number Sat	7/A and above %	4/C and above %	1/G and above %	U and above %
GCSE England	Religious Studies	2025	217483	31.7	73.2	97.9	100.0
GCSE England	Religious Studies	2024	223034	31.1	72.5	98.1	100.0

Category	Subject	Sex	Year	Number sat	% of Total number sat	7/A and above %	4/C and above %	1/G and above %	U and above %
GCSE UK	RS	M	2025	108869	3.5	25.1	67.2	96.8	100.0
GCSE UK	RS	M	2024	111901	3.6	24.1	66.5	97.0	100.0
GCSE UK	RS	F	2025	128646	4.2	38.0	78.6	98.8	100.0
GCSE UK	RS	F	2024	133118	4.3	37.6	77.8	98.9	100.0
GCSE UK	RS	M & F	2025	237515	3.9	32.1	73.4	97.9	100.0
GCSE UK	RS	M & F	2024	245019	4.0	31.4	72.7	98.0	100.0

GCSE Short Course

Category	Subject	Sex	Year	Number sat	% of Total number sat	7/A and above %	4/C and above %	1/G and above %	U and above %
GCSE UK	RS	M	2025	12978	95.8	19.9	55.5	92.1	100.0
GCSE UK	RS	M	2024	13509	95.8	18.6	54.6	92.1	100.0
GCSE UK	RS	F	2025	12524	98.6	32.6	68.2	96.1	100.0
GCSE UK	RS	F	2024	12253	98.1	31.5	69.1	96.6	100.0
GCSE UK	RS	M & F	2025	25502	97.1	26.2	61.7	94.1	100.0
GCSE UK	RS	M & F	2024	25762	96.9	24.7	61.5	94.3	100.0

NATRE's summaries for GCSE RS: www.natre.org.uk/resources/gcse-religious-studies-2025-national-report-for-england-and-wales/

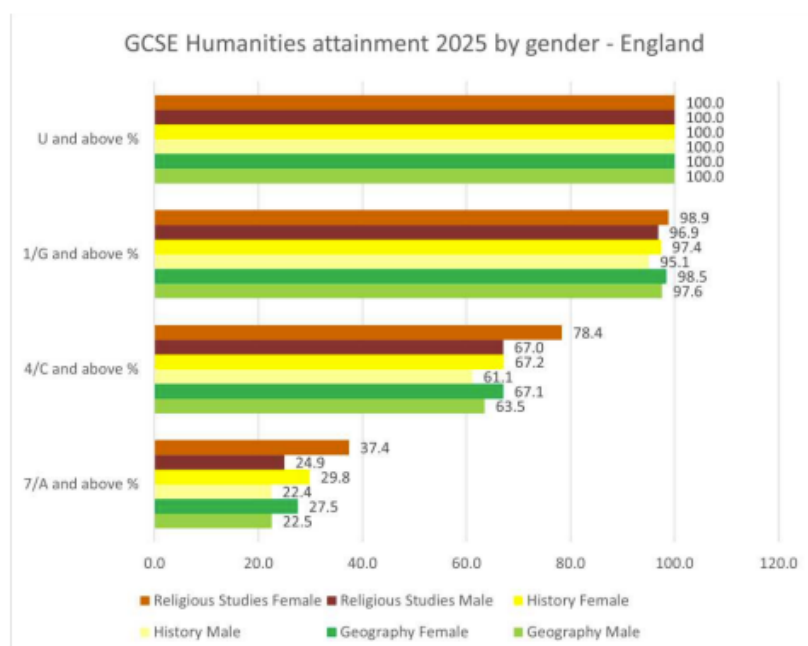
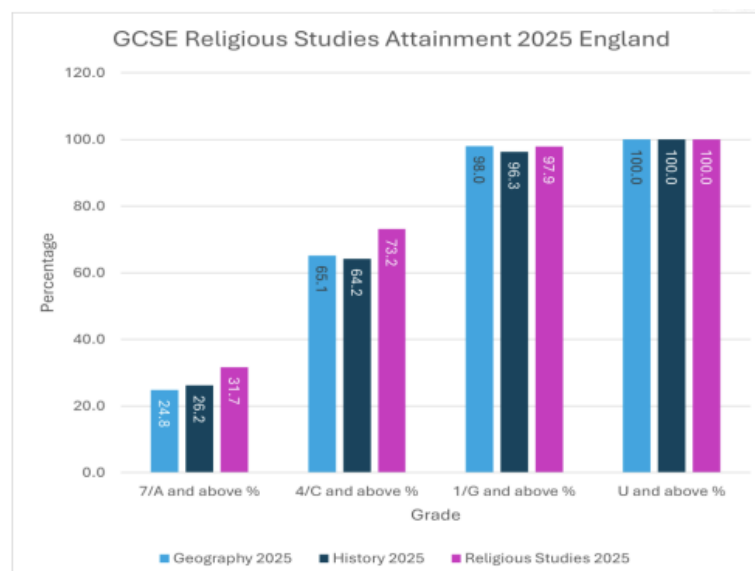
Attainment: RS shows stronger outcomes than History and Geography, particularly at higher grades. In England, 31.7% of RS candidates achieved grade 7/A+, compared to 26.2% in History and 24.8% in Geography.

Ofqual research into comparability, shows that Religious Studies at GCSE sits roughly in the middle of the range in terms of level of difficulty of all subjects.

Gender differences: Girls significantly outperform boys in RS. In England, 37.4% of girls achieved grade 7/A+ compared to 24.9% of boys. The gender gap is wider than in other humanities.

Comparison with other humanities: RS provides girls with higher attainment than they achieve in either History or Geography, consolidating the subject's role as a strong option for female pupils.

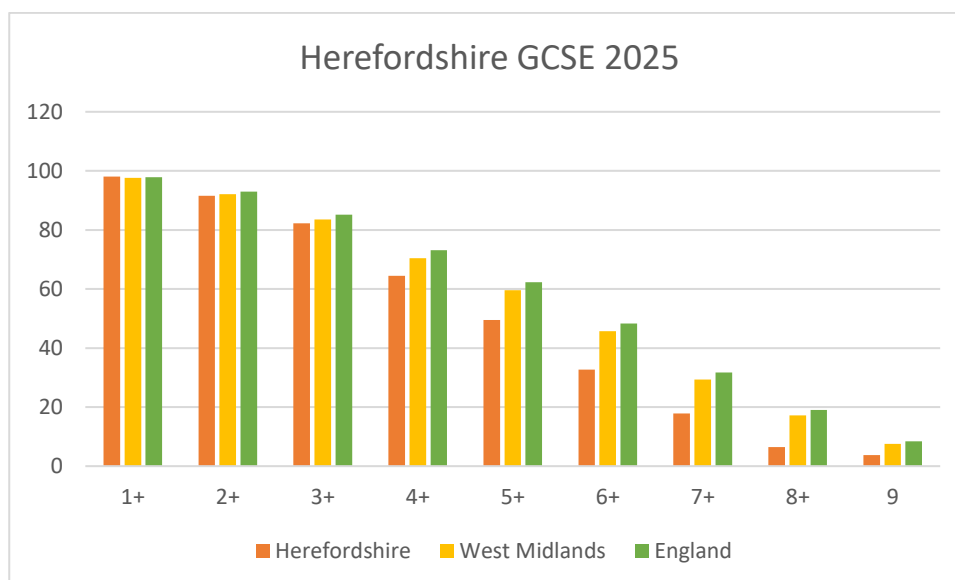
Entries in England: RS entries are stable at around 240,000 annually, showing resilience compared to other optional subjects, despite curriculum pressures.



Herefordshire GCSE data 2025:

The unvalidated data shows Herefordshire GCSE results against nearby counties, the West Midlands and England. There were 535 entries in 2025. [Map of GCSE \(9 to 1\) grade outcomes by county in England](#)
Results for all ages.

Grades	Herefordshire %	Glos % (2310)	Worcs % (1,560)	West-Midlands	England %
1+	98.1	98.3	98.7	97.6	97.9
2+	91.6	93.7	94.2	92.1	93
3+	82.2	87	86.2	83.5	85.2
4+	64.5	75.1	73.7	70.4	73.1
5+	49.5	63.9	61.2	59.6	62.3
6+	32.7	50.4	45.8	45.7	48.3
7+	17.8	33.5	28.5	29.3	31.7
8+	6.5	21	16.3	17.2	19
9	3.7	9.1	5.8	7.6	8.4



Compare with 2024, where there were 540 entries in Herefordshire.

Grades	Heref %	West Mids	England %
1+	97.2	97.7	98.1
2+	88.9	91.9	93.2
3+	80.6	82.9	85.2
4+	67.6	69.5	72.5
5+	52.8	58.9	62
6+	36.1	44.5	47.9
7+	18.5	28.2	31.1
8+	9.3	16.6	18.8
9	2.8	6.7	7.9

2019-2025:

	Entries	Grade 4+	England
2025	545	64.5	73.1
2024	540	67.6	72.5
2023	525	62.9	72.2
2022	520	70.2	76.7
2021	645	79.1	80.2
2020	915	77.6	80.5
2019	655	71.0	72.3

School Census Data

NATRE works with the Department for Education to collate information from the School Workforce Census about religious education teaching in England. NATRE has produced a report analysing the data: <https://natre.org.uk/news/dfe-school-workforce-census-november-2024-report-published-in-june-2025/>

The School Workforce Census allows the DfE to collect curriculum information from a large sample of secondary schools. Not all schools provided complete curriculum information. Where returned information on curriculum is mostly incomplete, the data for these schools has been removed from published analysis. In 2024, 2,800 secondary schools (81.0%) provided usable curriculum information.

1. There has been a decrease in the number of schools that report offering zero hours of RE in year 11 from 16.4% in 2023 to 14.4% in 2024. While indicating an improvement, this equates to 1 in 6 schools are breaching their statutory duty to provide RE for all pupils in all year groups. It is worth noting that because the number of schools reporting other subject data but not RE has increased, SACREs will need to verify the levels of provision in those schools by another method. They will also need seek information from those who did not report curriculum data at all this year.
2. In 2024, more than 42% of state funded secondary schools reported offering less than 3% of curriculum time in year 11. However, this is a decrease from 46% in 2023. When this data is cross referenced with GCSE entries, it suggests that where schools report a small percentage of provision, this equates to a small GCSE option group. Again, this practice represents a breach of statutory entitlement because those pupils who do not opt for the GCSE course are entitled to their statutory RE. The new [Ofsted toolkit](#) references pupil's entitlement, NATRE hopes that more attention is drawn to this.
3. The gap between levels of provision in schools with a religious character and those without has been widening each year. More than 81.3% of schools and academies with a religious character offer more than 3% of curriculum time in year 11 for Religious Education compared to 23% of schools and academies without a religious character. This level of provision is not a big ask for a core subject of the basic curriculum. In a 30-period week this represents only 45 minutes approximately each week. The time recommended to fulfil the requirements of most local agreed syllabuses is 5% i.e. about 75 minutes.

Ofsted's renewed Education Inspection Framework and Toolkit 2025

Ofsted has brought out a [new toolkit](#) to advise schools on the areas that will be evaluated and graded renewed inspection framework.

[NATRE has produced a slide show](#) that compares the current 2024 handbook with the new 2025 Toolkit (due for implementation from November 2025).

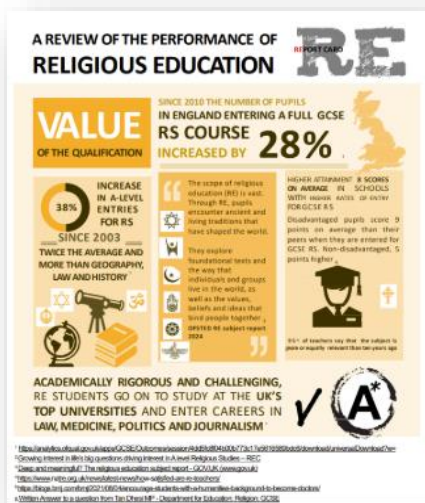
The presentation highlights what continues and what's new for RE, including:

- RE's place in the **basic curriculum**
- the strengthened framing of the curriculum as an "**entitlement for every pupil**" (including pupils with **SEND**)

- the re-framed **Personal development and well-being** area (with explicit references to **faiths and beliefs** and **British values**)
- a clearer emphasis on **Inclusion** and **protected characteristics**
- explicit recognition of **prejudice-motivated bullying** (including on grounds of **religion or belief**), and
- expectations to **track participation** so all pupils including those with SEND, access RE and related opportunities.

NATRE's new Report Card: the state of RE in England 2025

64% of the UK adult population think an education in religion and worldviews (or RE) is important yet just under 1 in 6 schools report not offering it in year 11.



The National Association of Teachers of RE (NATRE) has been reporting on the data from the workforce census for the last ten years. Our agreement with the DfE allows us to share this information with school providers, SACREs and Academy Trusts.

This year's data shows slightly fewer schools offering no RE in year 11, but it is still the case that just under one in six schools told the DfE that they do not offer RE to this year group at all and far more admit to not providing RE to pupils who do not choose a GCSE Religious Studies as one of their options. In both these cases, this means that effectively, pupils' religious education ends when they are just 13 or 14 years old, when the law in England requires that the subject be taught to age 18.

You can read the full report here: www.natre.org.uk/resources/a-review-of-the-performance-of-religious-education-report-card-2025/

NASACRE Training

NASACRE (National Association of Standing Advisory Councils on Religious Education) continues to work to celebrate, support, strengthen and promote the work of local SACREs and represents their interests at a national level, including training for SACRE members.

- November 2025 (various), 6:30-8pm: NASACRE in Conversation (regions) Free session for all SACREs to attend - but specifically for Chairs, Vice-Chairs, SACRE consultants and LA link officers
- 4 December 2025, 4-5:30pm Supporting your SACRE as a Professional Advisor Free to SACREs who have bought the annual webinar package £25 for a subscribed SACRE and £35 for a non-subscribed SACRE
- 22nd January 2026, 7-8pm, Chair/Vice-chair & LA link officer focus How to ensure your SACRE is fit for purpose? Free to SACREs who have bought an annual webinar package £25 for a subscribed SACRE and £35 for a non-subscribed SACRE
- 25th June 2026 So, you've joined your local SACRE... Free session for any SACREs to attend specifically for new members of SACRE

Survey on Withdrawal from RE and Collective Worship in England

School staff are invited to take part in a brief online survey regarding withdrawal from RE and Collective worship in English schools. The survey is being conducted by Exeter University. It aims to gather information on how widespread the request for withdrawal is, and where requests are received, how they are managed, by whom, and with reference to what sources of advice and guidance (if any). The survey does not collect any identifying information, so responses will remain anonymous. The survey should take less than 10 minutes to complete, and will remain open until 31st Dec 2025.

The survey can be accessed here: <https://forms.office.com/e/vMeinypKTx>

Events and publications to note

Interfaith Week 2025

Inter Faith Week is an annual initiative held in November that aims to strengthen interfaith relations across the UK. It aims to raise awareness of the diverse contributions of faith communities and promote understanding among people of different religious and non-religious beliefs. This year, Inter Faith Week 2025 will take place from **Sunday, 9 – Sunday, 16 November**.

Explore how to get involved: www.interfaithweek.org/events/about

Find out about local events: www.interfaithweek.org/

Resources can be found here: www.interfaithweek.org/resources

The theme of this year's Interfaith Week for schools is **Community: Together we Serve**.

Schools have a dedicated site for Interfaith Week: www.ifw4schools.co.uk/ This site includes carefully curated resources to support schools throughout the week and events running throughout it.

RE Today is a proud partner in the Interfaith Week for Schools initiative and is making resources freely available for all schools to use throughout the week. **These free resources can be found at: [Interfaith Week for Schools 2025: Celebrating Diversity and Unity](#)**

YouGov data on belief in God

YouGov has been collecting and collating data on beliefs about God. The data is displayed over a few years from 2019 to 2025 in relation to believing in a God/Gods, having no belief in God/Gods and that there is no God but there is a belief that there is something spiritual in the world. The data can be filtered in terms of age, gender, region and social background. The data is available on the following link [Brits' beliefs about God\(s\)](#)

Religious Media Centre updates

The Religion Media Centre is an impartial and independent organization aiming to increase further cohesion and understanding in society by helping the media report and understand religion and belief. It does not promote any one religion or belief and has no editorial line other than religion matters. Instead, it exists to provide accurate, timely and relevant information to the media, enabling the public to be better informed. You can sign up for a weekly bulletin that will keep you up to date with the latest news relating to religions and faith. It also has 130 factsheets ideal for subject knowledge for SACRE members or teachers.

<https://religionmediacentre.org.uk/>

Training and support for teachers

Masters scholarships

CSTG Masters Scholarship Programme offers teachers and others working in the field of Religious Education, Religion Values and Ethics or Religious and Moral Education (RE/RVE/RME) an opportunity to undertake relevant masters-level professional development at reduced cost, and to see the impact of it in their workplace e.g. in their teaching, advisory work. There are a very limited number of scholarship places allocated each year to UK residents. They will pay up to £4000 towards your masters fees. In most cases you will be employed as a qualified teacher, teaching assistant or HLTA in a school in the UK. However, applications will also be considered from those working as advisers, educators or researchers in other settings.

www.cstg.org.uk/scholarship-programmes/masters/

Applications for this year have closed, but anyone interested in looking ahead to future years, you need to contact fiona@cstg.org.uk for a formal conversation before submitting an application.

Farmington scholarships

Every year Farmington supports around 30 primary and secondary teachers (including head teachers) working in RE or associated subjects (for example, philosophy or moral and ethical education, SEND) to have up to 30 days out of the classroom to pursue a project of their own. It provides a supportive supervisor and access to a university library, if needed, as well as running an Induction Day for new scholars. Scholars attend the Annual Conference the year before they hold their scholarship, and the Conference at the end of the year, where they have to present their research. Scholars also arrange a presentation of their research at their school – to other teachers, to governors, and to other interested people from the locality.

Applicants must have the written support of their head teacher and must have worked at their current school for two years when they start the scholarship. They accept joint applications from two or more teachers working on the same project (not necessarily at the same school), but both teachers must fill in an application form.

Farmington pays costs for a cover teacher for the school, as well as all costs for the conference, travel and the induction day.

A scholar based in the West Country may be designated that year's **St Luke's Farmington Scholar**, through a partnership with the St Luke's College Foundation which provides generous support.

Their partnership with the Temple Grove Schools Trust allows them to offer up to 6 **Temple Grove Farmington Scholarships** each year. These are available to primary teachers in any subject, with the aim of promoting excellence in primary teaching.

2026-27 Applications will open Autumn 2025, to register your interest please email: institute@farmington.ac.uk

RE Hubs

Don't forget that the RE Hubs website offers extensive and growing links to people and places, locally and nationally. www.re-hubs.uk

FREE Training is offered for teachers leading local groups.

For new leaders: www.re-hubs.uk/uploads/new2leading.pdf

- Thursday 4th December Session 2: 4-5:30pm

For current leaders, a session on growing your RE network: www.re-hubs.uk/uploads/localleadercpd.pdf

- Thursday 20th November 2025 - 4 PM - 5.30 PM

Network for MAT RE Leads: www.re-hubs.uk/uploads/RE-Hubs-CPD-flyers-v2-202526-2.pdf

FREE for NATRE and AREIAC members

- 14 October 2025 - 4.00 - 5.30 PM Speaker: Emma Salter, leader of the personal knowledge in RE research project

NATRE-supported webinar for teachers of A level Religious Studies

Libby Ahluwalia, an experienced examiner and teacher will be offering an online meeting for teachers of A Level Religious Studies in order to provide guidance and supporting on advising students with university applications. Libby will cover a variety of elements including choosing the correct course, writing a statement and interviews skills. The event is being held on **Thursday 6th November between 6pm and 7pm**. Any teacher who wishes to attend should email k.steele@worc.ac.uk to join the NATRE A Level group and to register for the event.

Upcoming RE Today courses for the Summer Term and beyond!

RE Today supports a number of SACREs, and offers a variety of training courses to teachers as well. See more details on any of these courses at www.retoday.org.uk/school-support/professional-development-courses/

Primary

- **Primary - Understanding Christianity**
13th November 2025 (afternoon 1.00 pm – 4.00 pm) – Julia Diamond-Conway
Day 2 – 27th January (1.00 pm – 4.00pm) and Day 3 – 20th May (1.00 pm – 4.00pm)
RE Today has an online e-learning course for [Understanding Christianity](#).

Secondary

- **GCSE RS – Better thinking, better writing, better results**
13th October 2025 (Afternoon 1.30 pm – 4.30 pm) – Angela Hill
- **Understanding Christianity – Secondary**
5th November 2025 – (All Day 9.30 am – 3.30 pm) – Stephen Pett
- **Powerful Knowledge in RE**
12th November 2025 (Afternoon 1.30 pm – 4.30 pm) – Angela Hill

RE Today also offers bespoke training and support for schools. See [here](#) for more information.

SACRE National News Updates from RE Today
November 2025