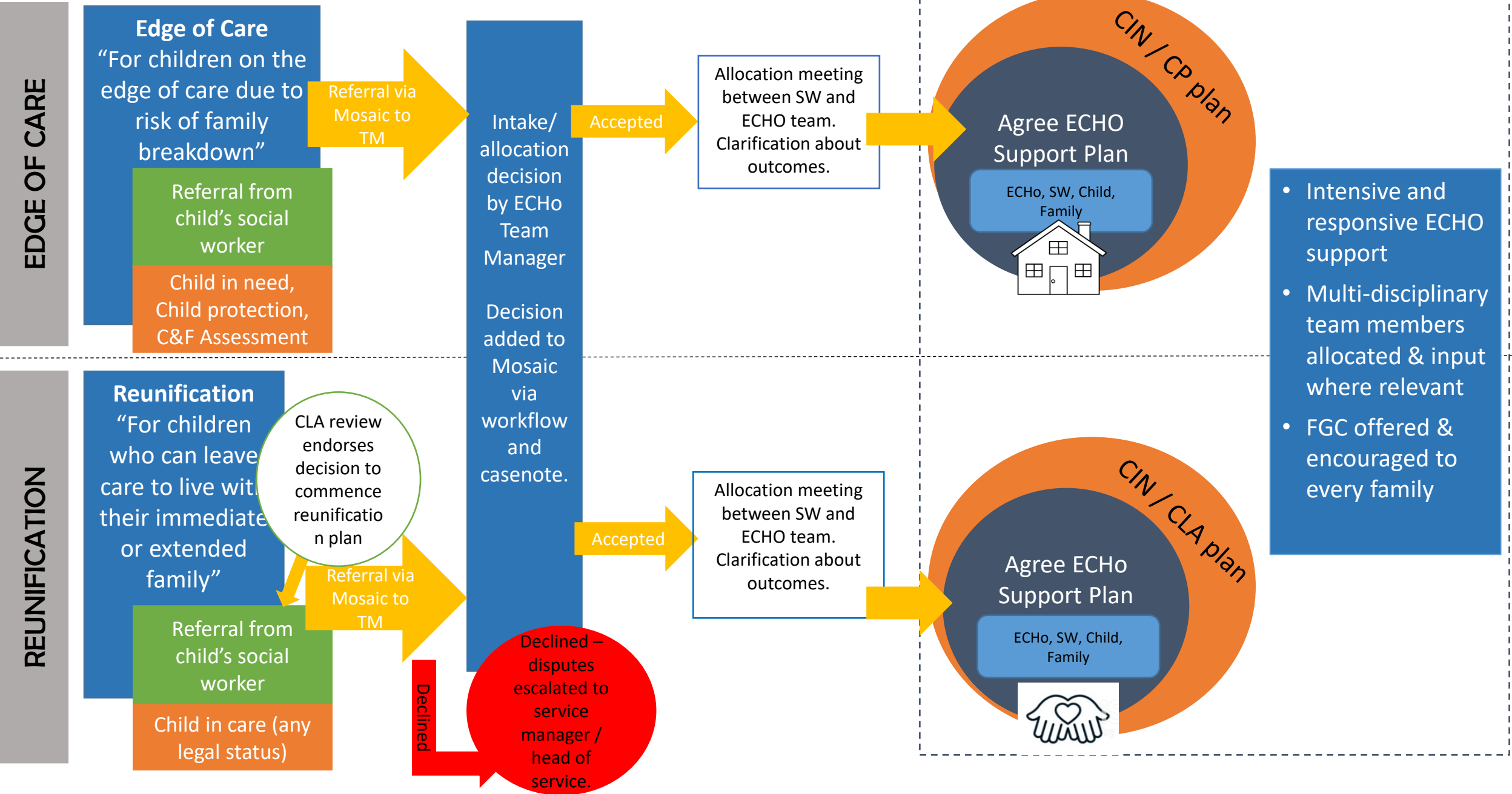
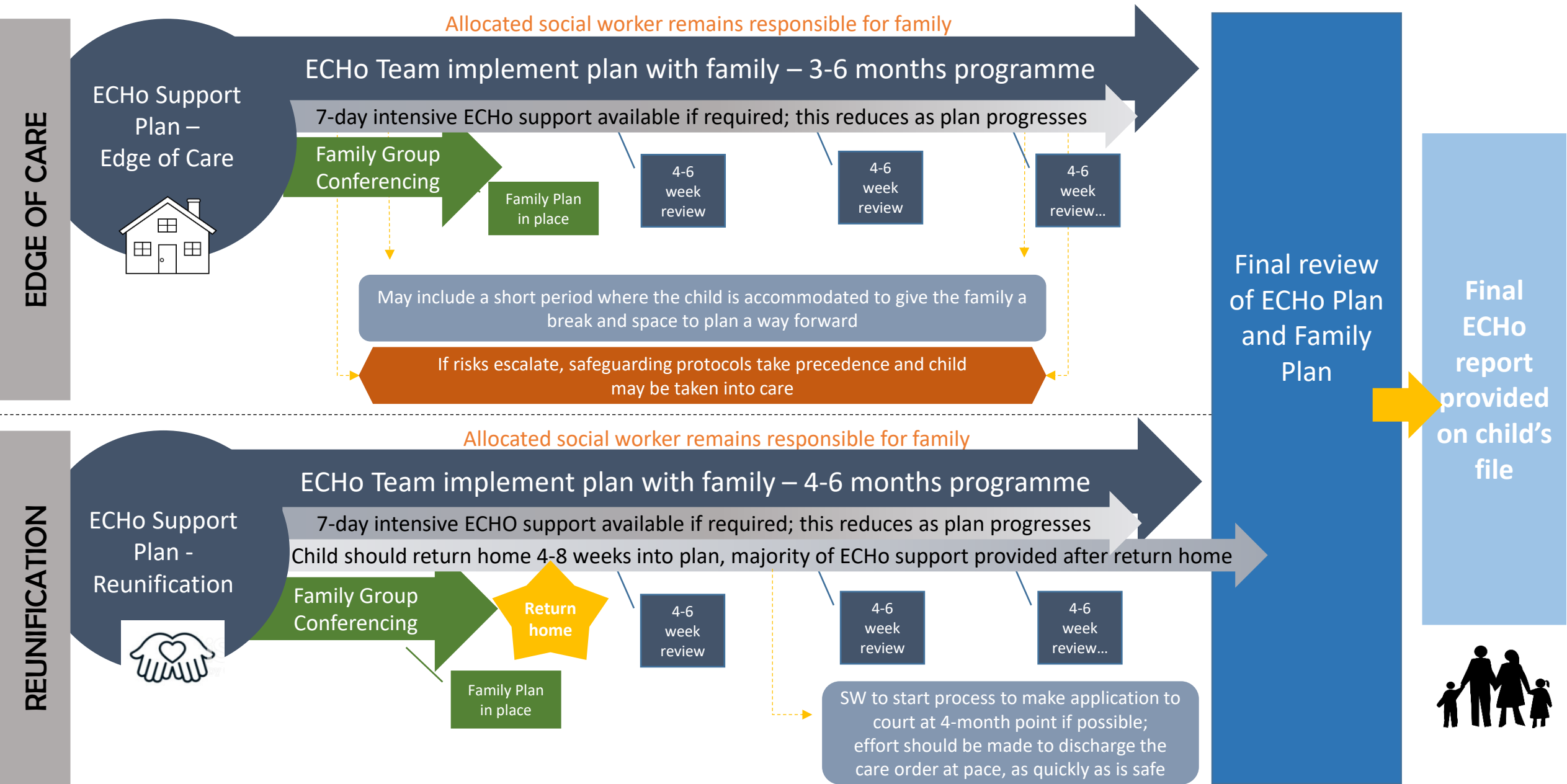


ECHO Road Map – Referrals and developing support plan



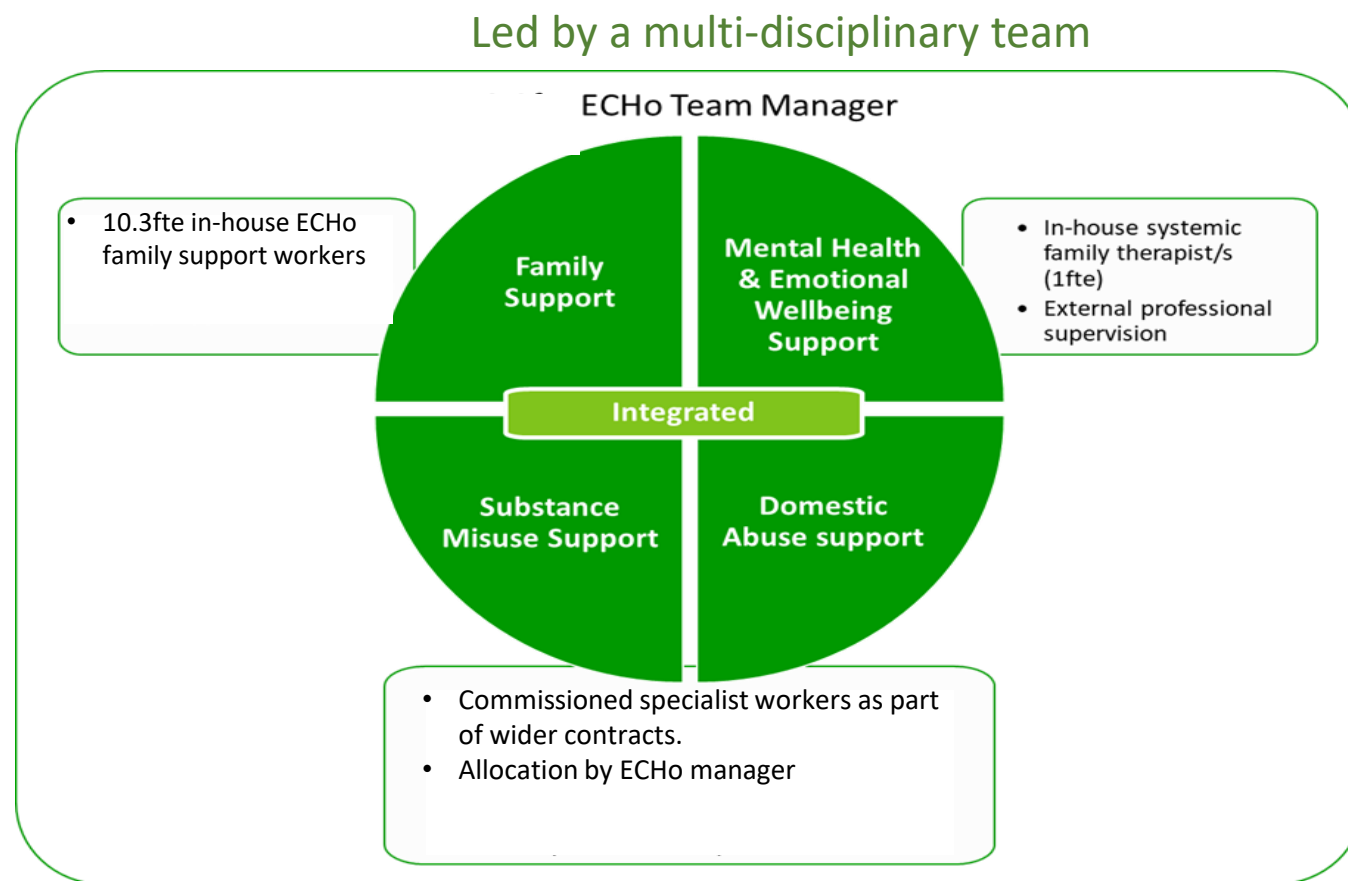
- Intensive and responsive ECHO support
- Multi-disciplinary team members allocated & input where relevant
- FGC offered & encouraged to every family

ECHO Road Map – Actions & Closure



ECHo (Edge of Care/Home) practice model

“The ECHo (Edge of Care/Home) model is relationship-based, strengths-based and solutions-focused”



Core principles:

1. We work with the whole family, mainly in the home environment but also in other community settings
2. We dedicate more time to support individual families than other types family support or social care roles can normally offer
3. We work together as a multi-disciplinary team
4. We apply evidence-based interventions
5. We work with each child and family to develop clear and measurable goals, which we will review on a regular basis
6. We are responsive to changing needs
7. We work closely with the Safeguarding and Looked After services, with multi-agency partners and the voluntary sector

ECHO practice model (2)

- ECHO works systemically, understanding families as a system, and investing time and resources into understanding how they relate to and communicate with one another
- Systemic family therapist to make a systemic formulation of the family's situation and offer family therapy
- Systemic family therapist will guide ECHO
- team members to shape plan

Systemic Approach

- Solihull approach will guide family support workers' interactions with children and families
- ECHO family support workers trained in Solihull Approach

Solihull Parenting

A parenting programme focusing on containment, reciprocity and behaviour management

The ECHO team may also apply elements or tools from other approaches, for e.g. PPP, Graded Care Profile, Respect Young People Programme, Engage Programme, Sensory Integration

- Every family is offered a family group conference
- Family Group Conference Coordinators will support families to develop a Family Plan, which can be reviewed throughout the period of ECHO support

Family Group Conferencing

A process led by family members to plan and make decisions for a child who is at risk.

Non-Violent Resistance Approach

- The NVR parenting approach as an alternative to behavioural approaches based on rewards and consequences
- NVR strengthens the relationship between parent and child.
- ECHO team trained in NVR approach