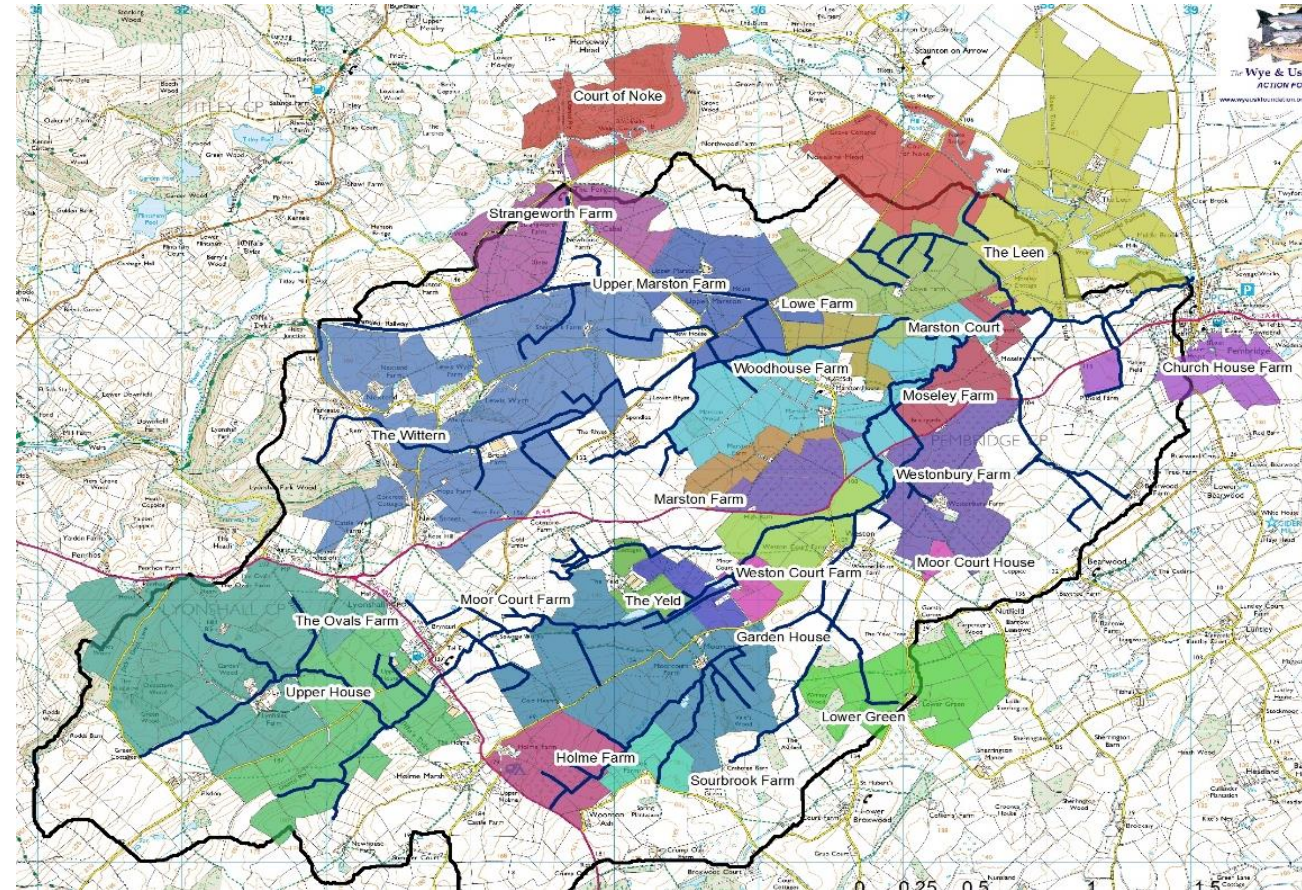


Go Wild in the Curl



- Catchment scale project 2016-2021
 - Core funding of £85k from DEFRA's "Facilitation Fund"
- 14 group members at launch
- Grown to 24 group members
- Funded for group events/meetings
- Nutrient balances completed
- Wildlife & farmland bird surveys
- Tackling invasive weeds
- Monitoring & addressing phosphate diffuse pollution



Go Wild in the Curl



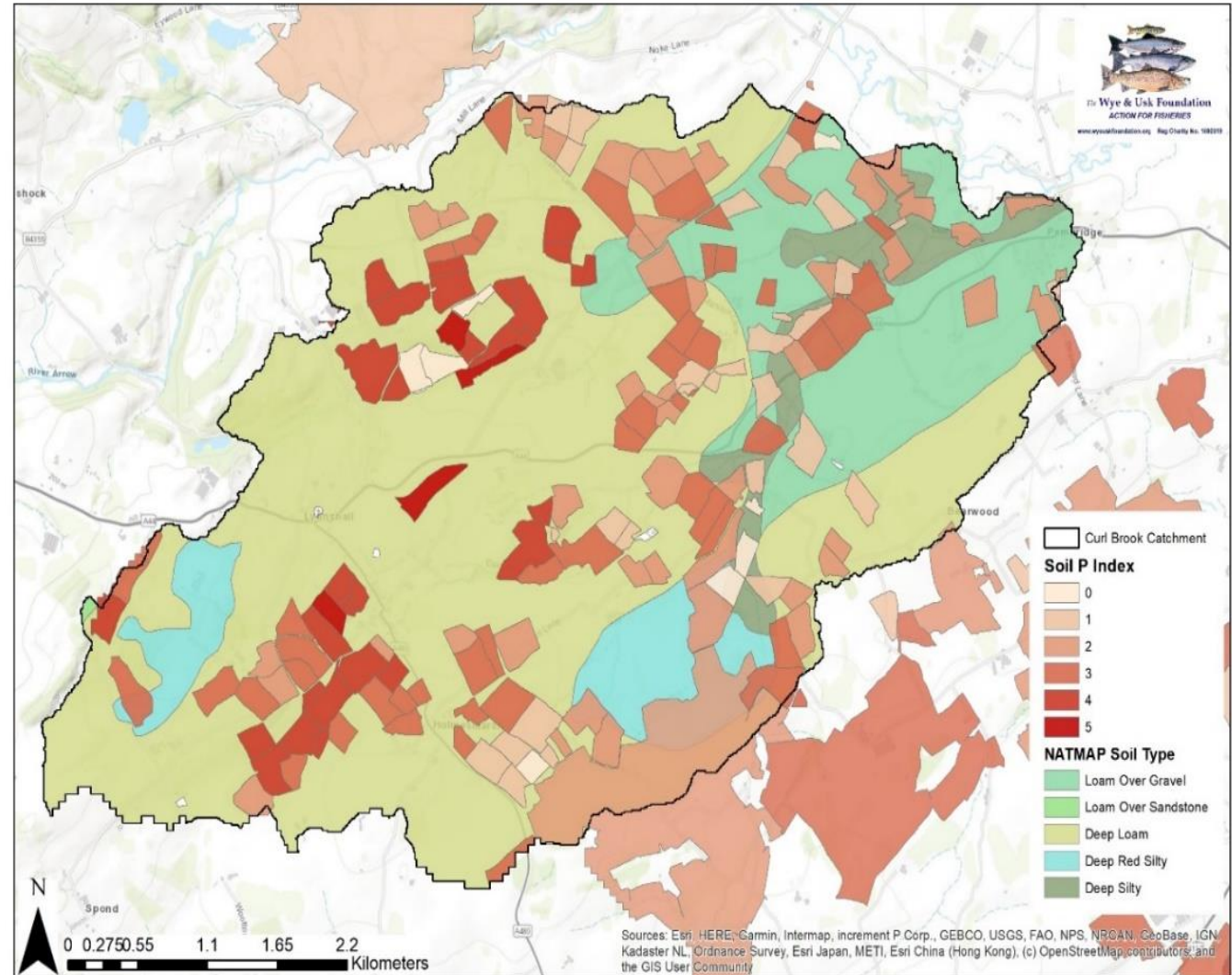
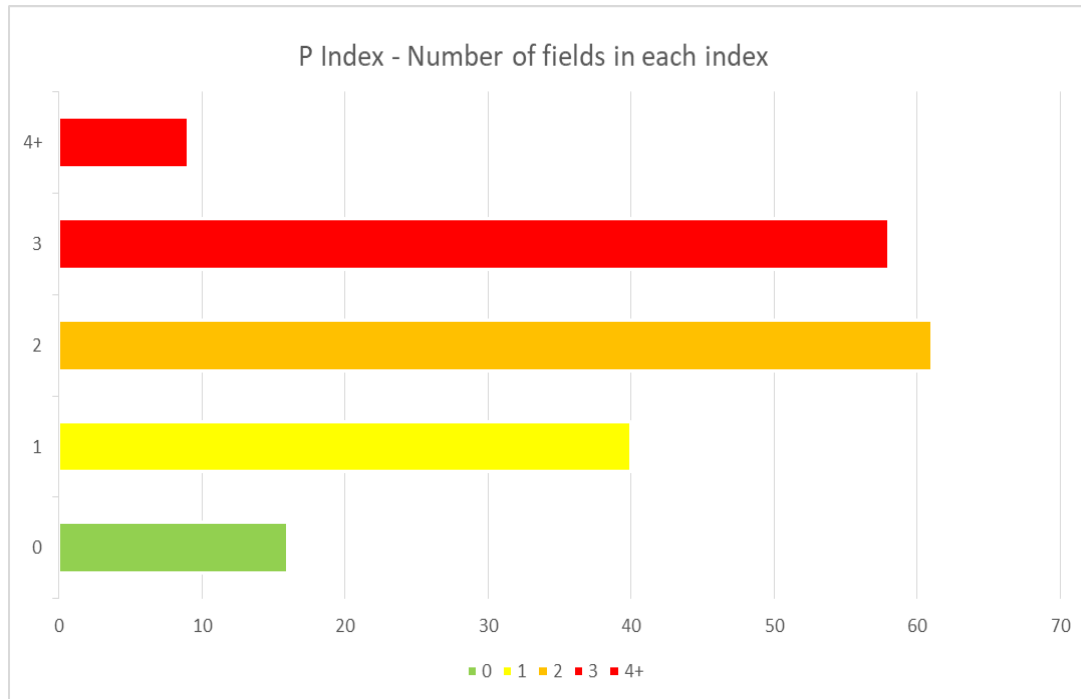
26 meetings fostering peer to peer knowledge transfer between group members:

- Bird identification
- Soil health
- Reducing carbon footprint
- Visit to Sewage Treatment Works
- Natural Capital assessments
- Drinking water provision for livestock
- Watercourse health



Soil Testing

Annually conducting soil tests to assess phosphate levels and taking account of these for each farm phosphate balance....



Farm Phosphate Balance



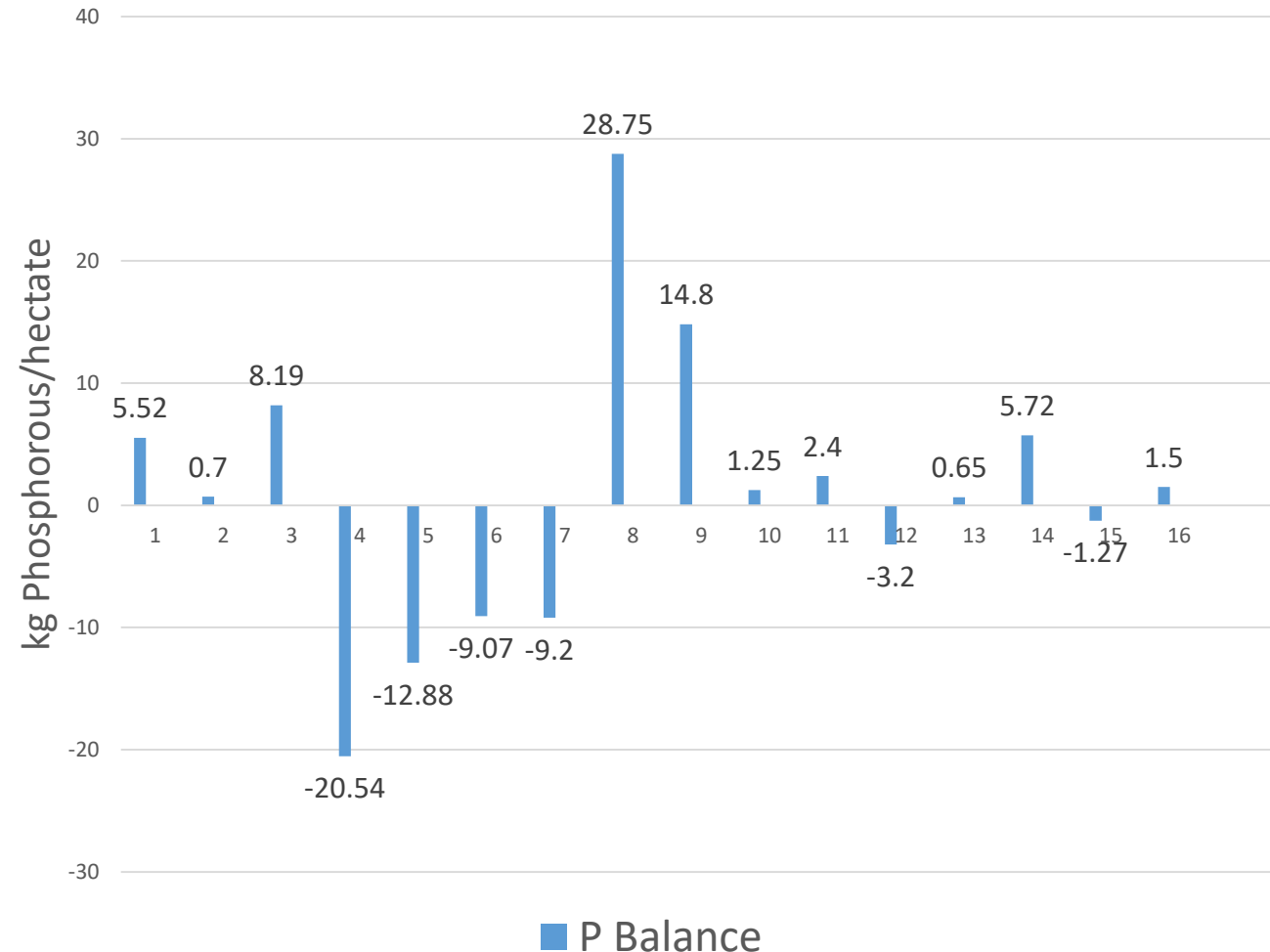
Accounts inputs & outputs to give indication of P “balance” and whether they are building or mining P in their soils.

Inputs onto farm:

- Bagged Fertiliser
- Organic manures (poultry, cattle, digestate)
- Bought in feedstuff
- Livestock

Outputs from farm:

- Crop produce
- Livestock & produce (milk, wool, chickens,)
- Organic manures



Utilising Countryside Stewardship to secure improvements

Countryside Stewardship funding drawn into the catchment through group member schemes between 2016-2021 are valued at upwards of £920,000.

A summary of the benefits secured through these schemes can be found below:

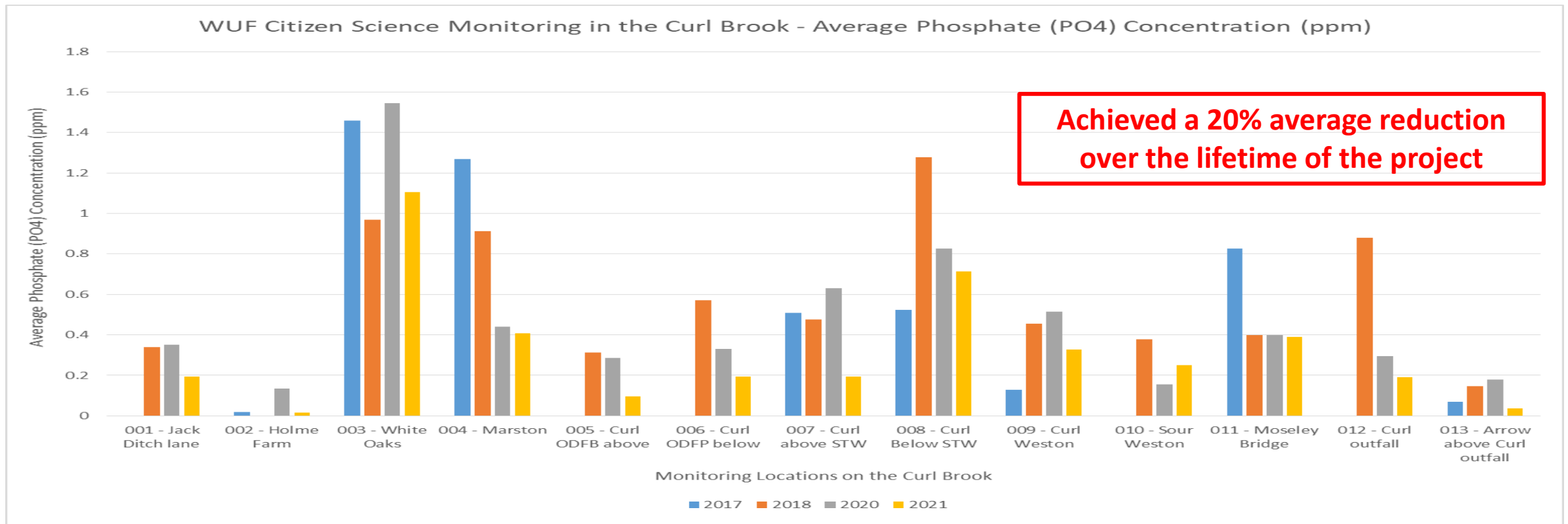


Option	Quantity/Area
Hedgerow restoration/management	6500m
Planting new hedges	750m
Buffer strips	4.89 ha (approx. 10 km watercourse protected)
Grassland management	41ha (including 27 ha of herbal ley)
Wildlife habitat (bird food/pollinators)	6.12 ha
Traditional Orchard management	7.5ha
Protection of traditional farm buildings	2215m ²
Roofing (manure stores/silage clamps)	5311m ²
Concrete yard renewal	10268m ²
Yard drainage	890m
Tracks	700m
Livestock drinking systems	2496m pipework & 15 drinking troughs
Fencing (watercourses & habitat protection)	17,348m
Pesticide handling and disposal infrastructure	1 unit

Citizen Science Monitoring



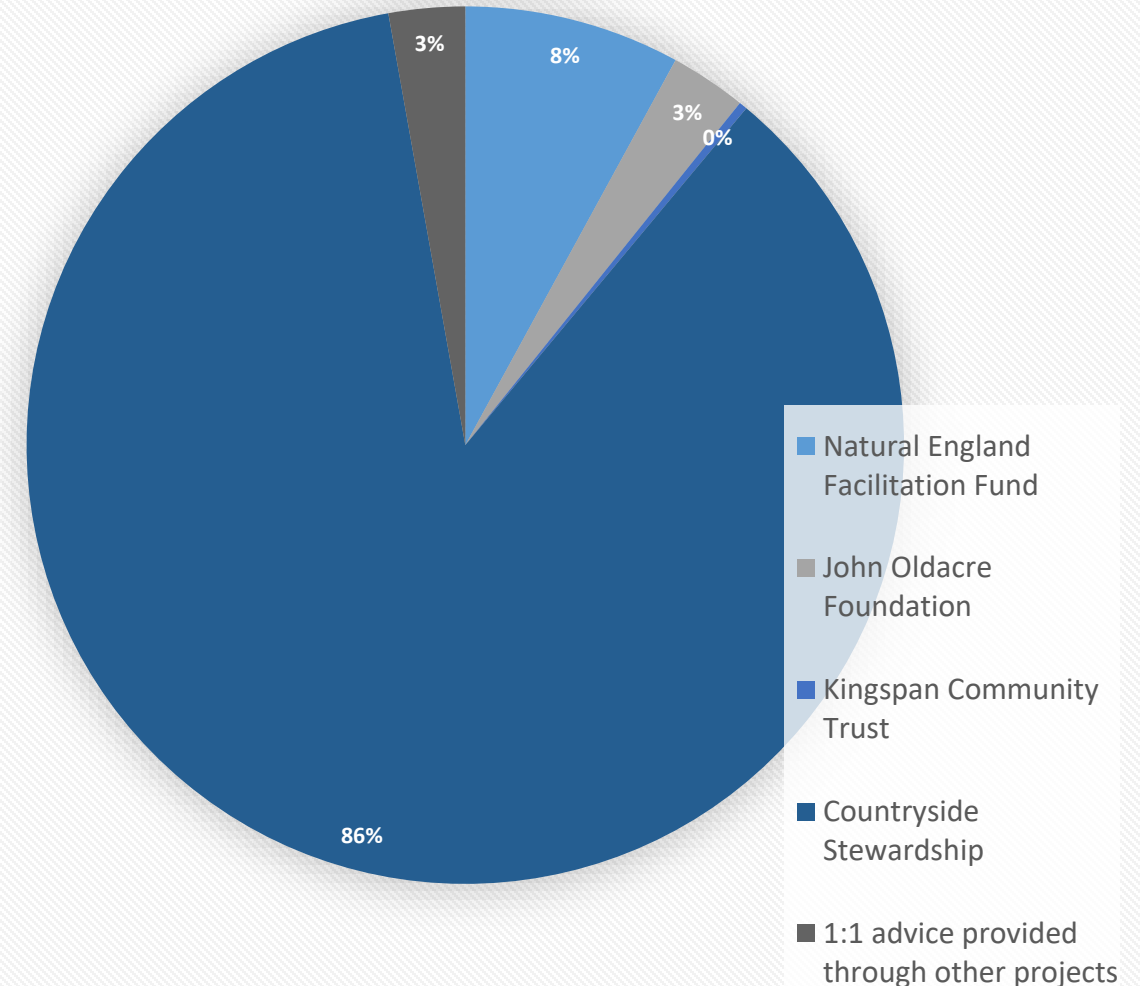
- Monitoring data identified key locations which consistently had higher phosphorous readings where effort needs to be focussed by group members to reduce pollution sources.
- Monitoring also confirmed significant levels downstream of the sewage treatment works which have guided engagement with DCWW.



Project Finances

The project has been delivered through a combination of funding streams as well as significant in kind contributions from group members and volunteers.

- Natural England/DEFRA £85k over 6 years to support the core facilitation of the group, group meeting costs, soil monitoring and phosphate balances
- Monitoring has been supported by charitable trusts, and time provided by local volunteers and WUF staff, the electrofishing was funded by direct contributions from the group chairman Tony Norman
- Countryside Stewardship Schemes have contributed £920,00 towards land management and infrastructure improvements.



Upscaling this model?

WUF could replicate this model of 5 years of facilitation in tributaries of the Lugg and Wye:

	Lugg (950 holdings)	Wye (1500 holdings)
Facilitation £1000/farm	£4.75m	£7.5m
Monitoring (citizen science & fixed point monitoring sondes for 20 tributaries)	£3.5m	£2.6m
External funding to be leveraged through SFI, LNR, LR, private markets	£18m	£29m



But 5 years of good work can
be undone in a flash...

20% reduction in P could be
significantly greater if
advisory approaches
underpinned with regulatory
floor...

