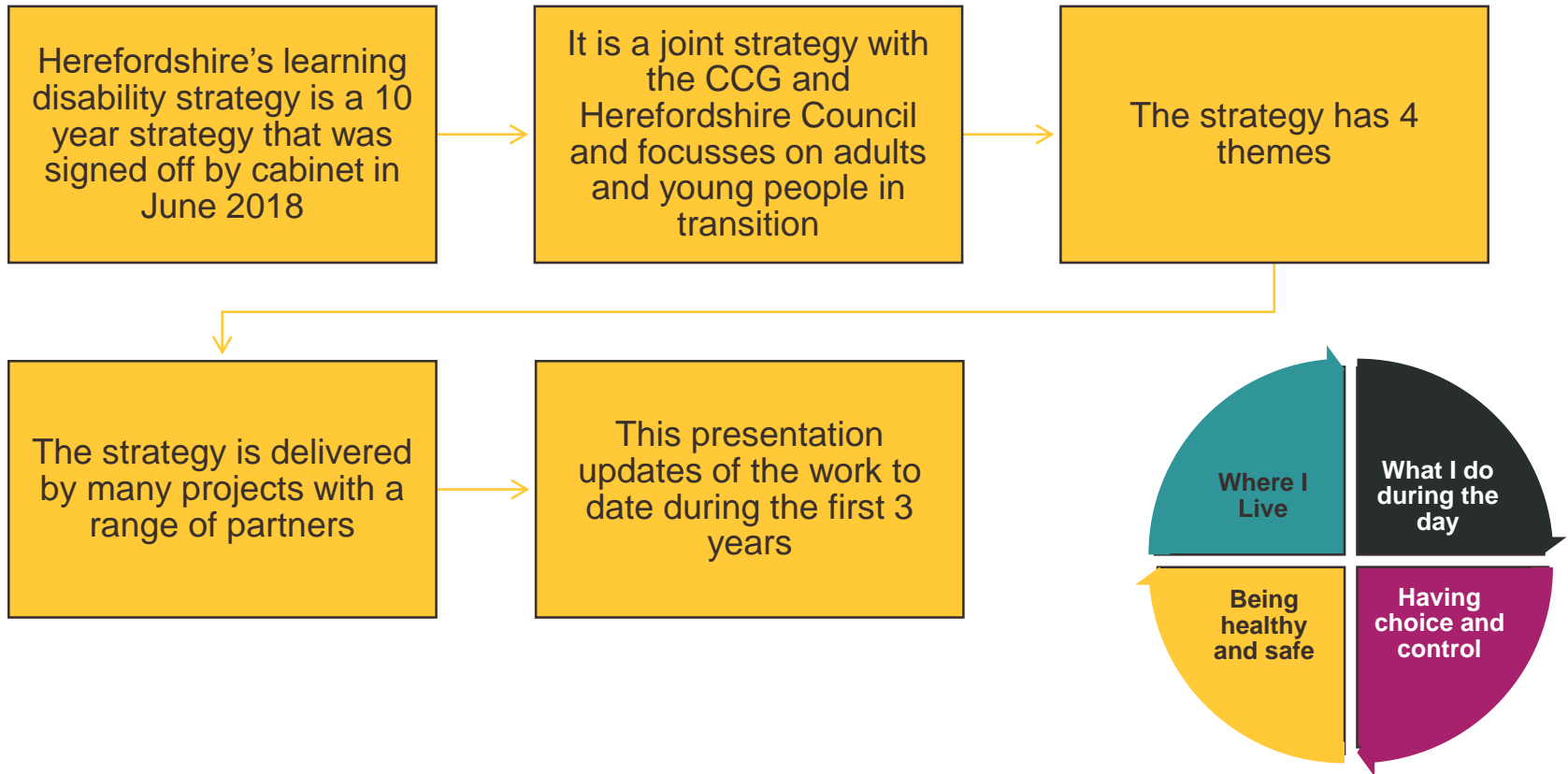


**Learning Disability  
Strategy Update  
Adult Wellbeing Scrutiny  
21<sup>st</sup> June 2021**

# Introduction



# Working together- LDPB

Learning Disability  
Partnership Board

Experts by  
experience

Family carers

Herefordshire  
Council Adults and  
Communities  
Directorate

Childrens  
Wellbeing - Senior  
advisor post 16

Cross directorate -  
transport,  
procurement

Clinical  
Commissioning  
Group

Community  
Learning Disability  
Team

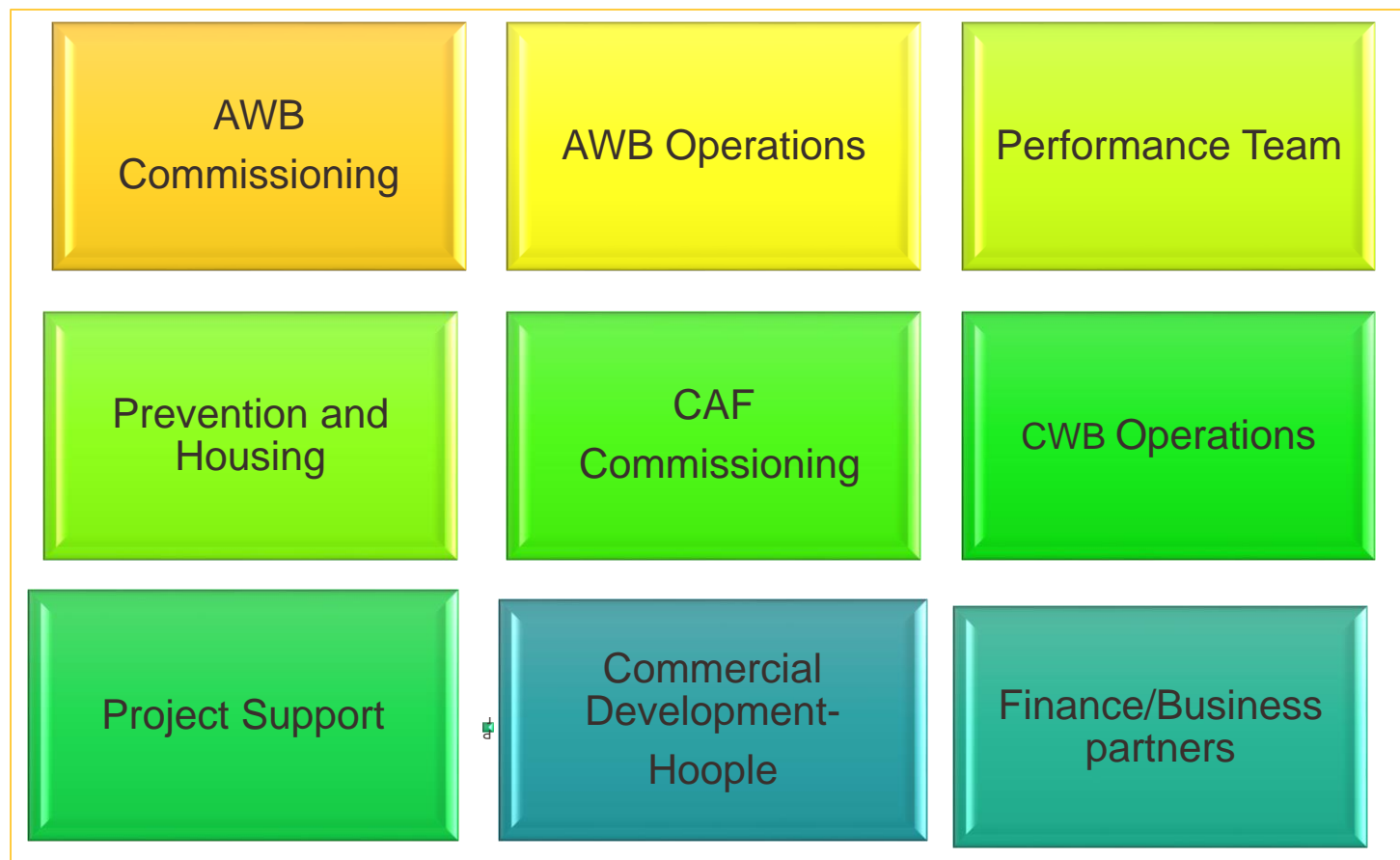
Wye Valley NHS  
Trust

Transforming Care  
Partnership

Sustainability and  
Transformation  
Partnership

Range of  
Providers

# Learning Disability and Complex Needs Board



# Sustainability & Transformation Partnership H&W

Herefordshire  
Council  
Commissioning

Experts by  
experience

Worcestershire  
Council  
Commissioning

Complex Care Lead

LeDeR  
Lead

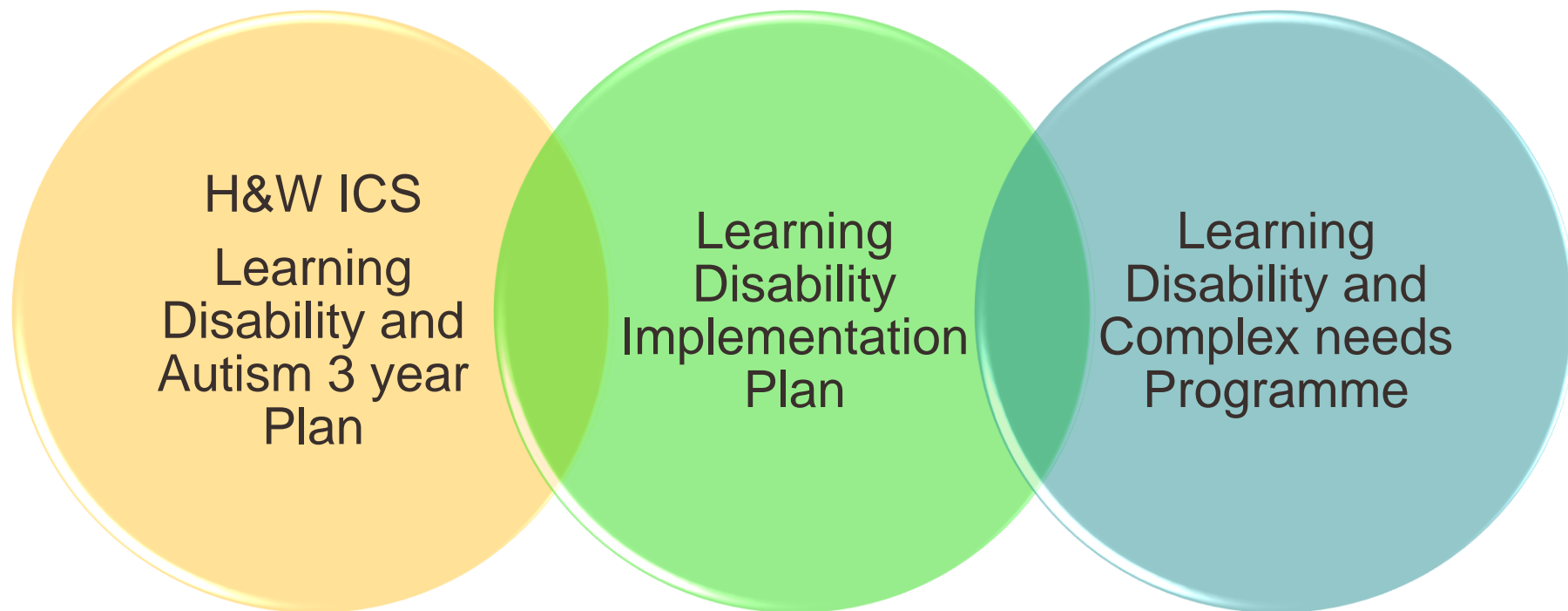
Clinical  
Commissioning  
Group Reps  
(LD & MH)

Wye Valley NHS  
Trust Reps

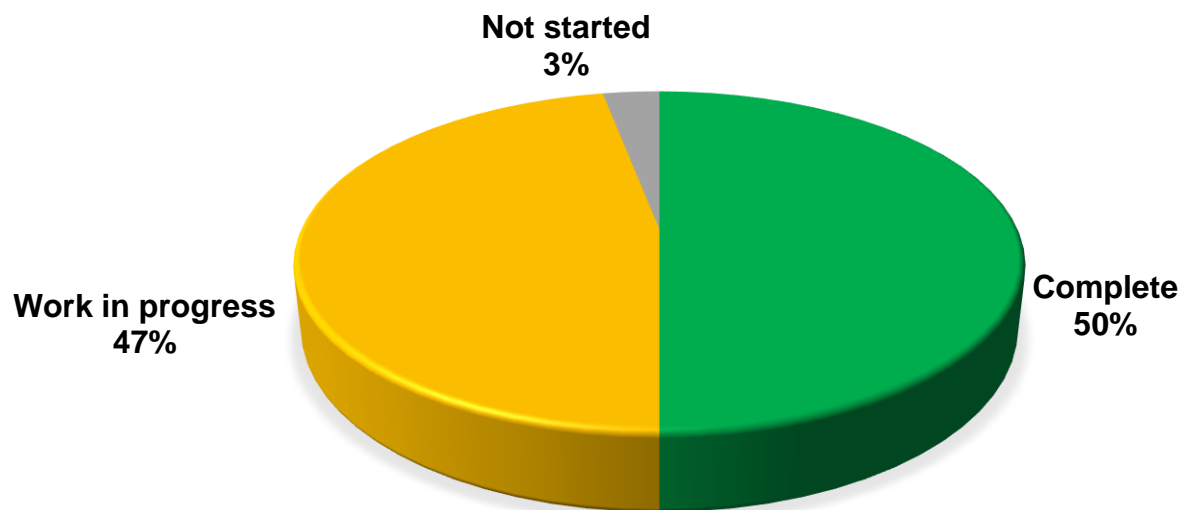
ICS reps

Community Learning  
Disability Team

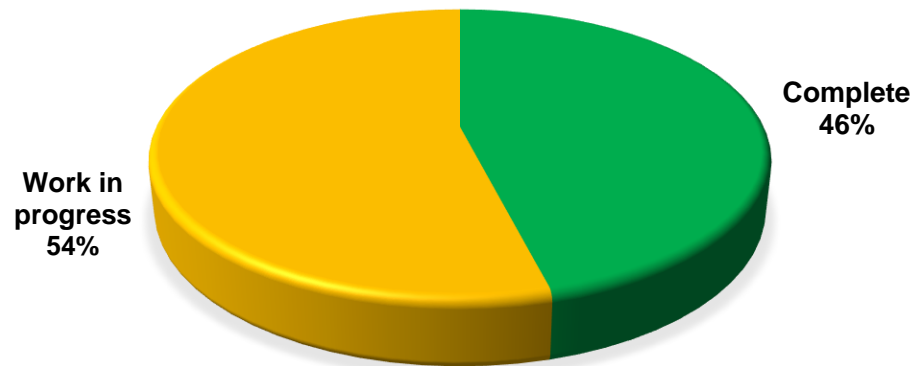
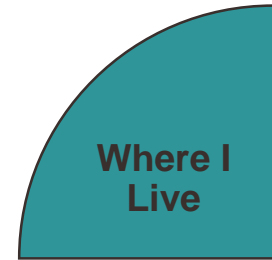
# How do the plans work?



# How are we doing overall against all the priorities?

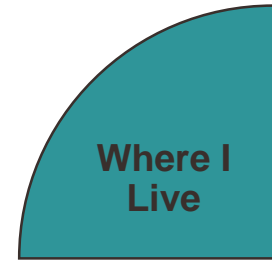


# How are we doing overall in the priority **where I live?**





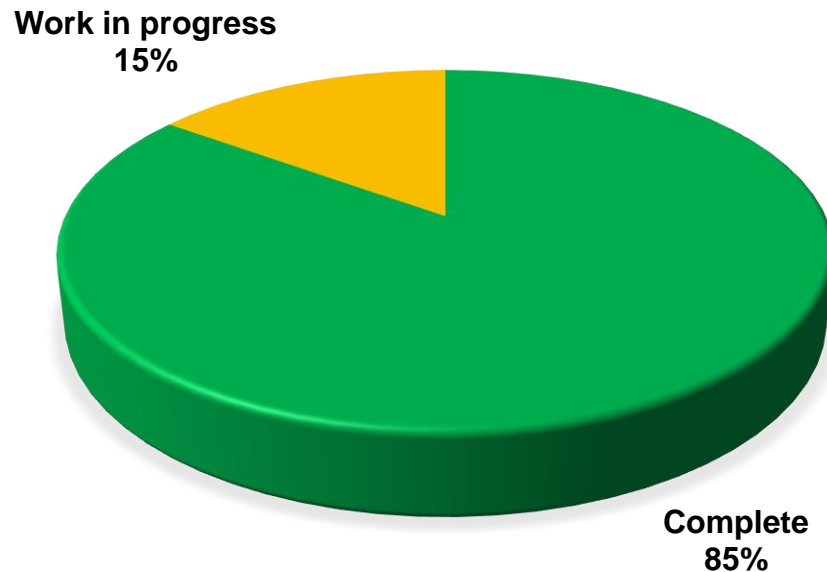
# Where I live



A personal story from a man with a learning disability who moved into a new supported living scheme developed as a result of the strategy

# How are we doing overall against the priority of **choice and control**

choice  
and  
control



# Example of what we are doing to embed the priority of **choice and control**

choice  
and  
control

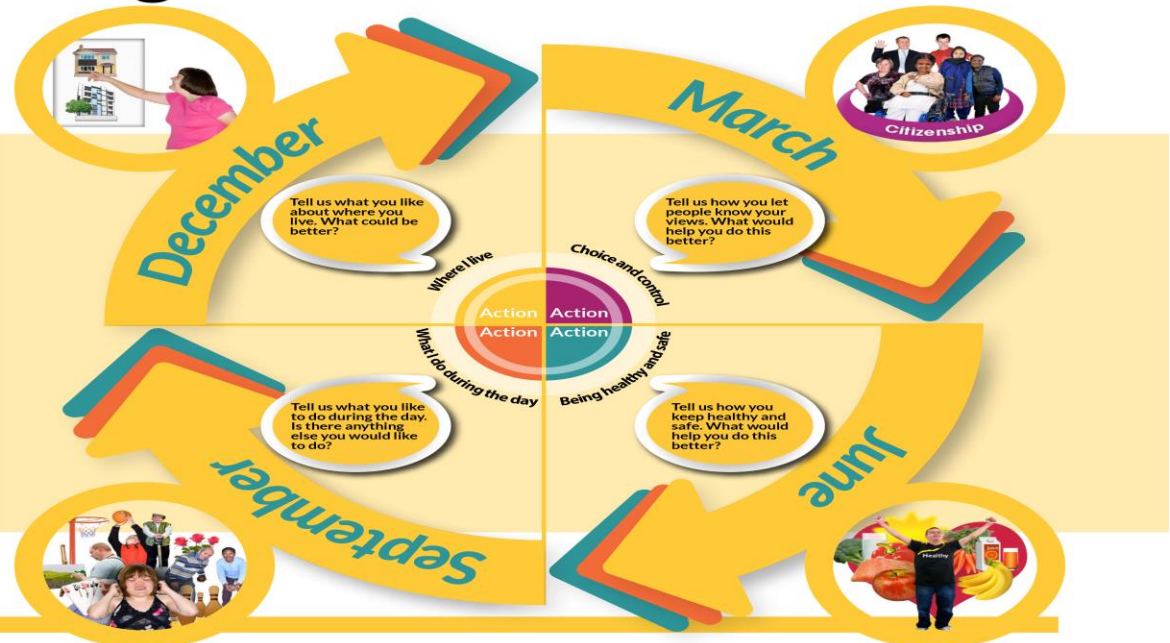


## “Nothing about me without me”

Help us make a difference to people's lives

- ✓ Talk about things that matter to you
- ✓ Get your views heard by decision makers
- ✓ See what they are going to do about it

[learningdisability@herefordshire.gov.uk](mailto:learningdisability@herefordshire.gov.uk)

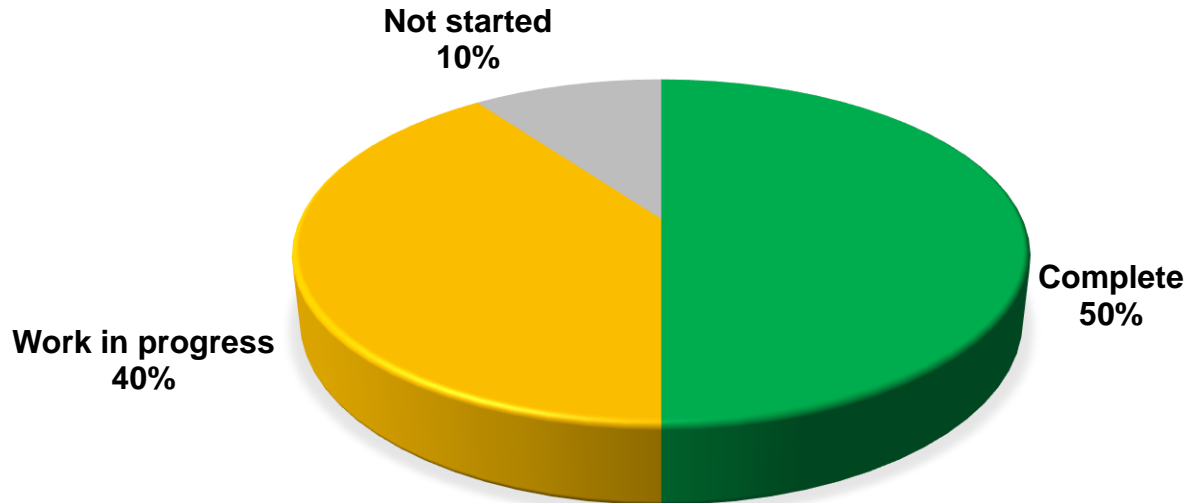


[hfdscouncil](#)


[herefordshire.gov.uk](http://herefordshire.gov.uk)

# How are we doing overall for the priority **what I do during the day**

What I do during the day



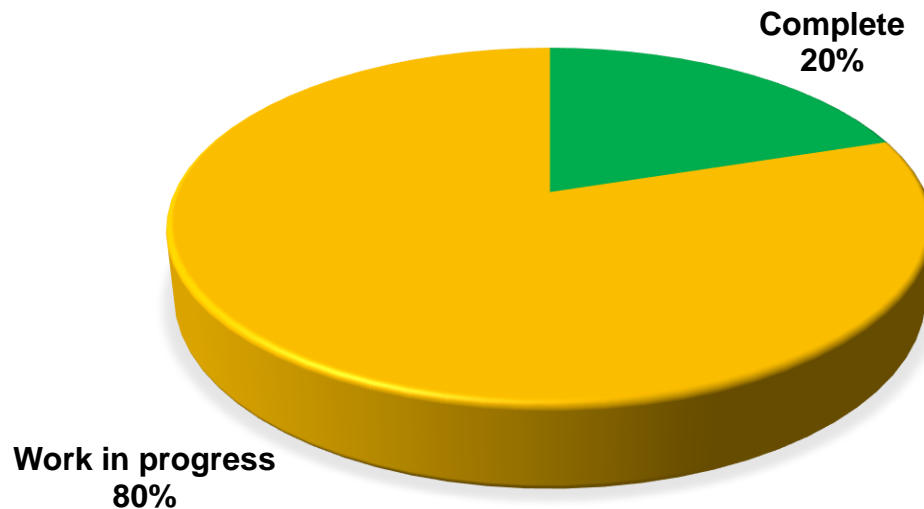
# What I do during the day



What I do  
during the  
day

A personal story of how a person with a learning disability has adapted during the Coronavirus pandemic, and how assistive technology reduces social isolation.

# How are we doing overall for the priority of **being healthy and safe**



# An example of the progress made against the priority of **being healthy and safe**

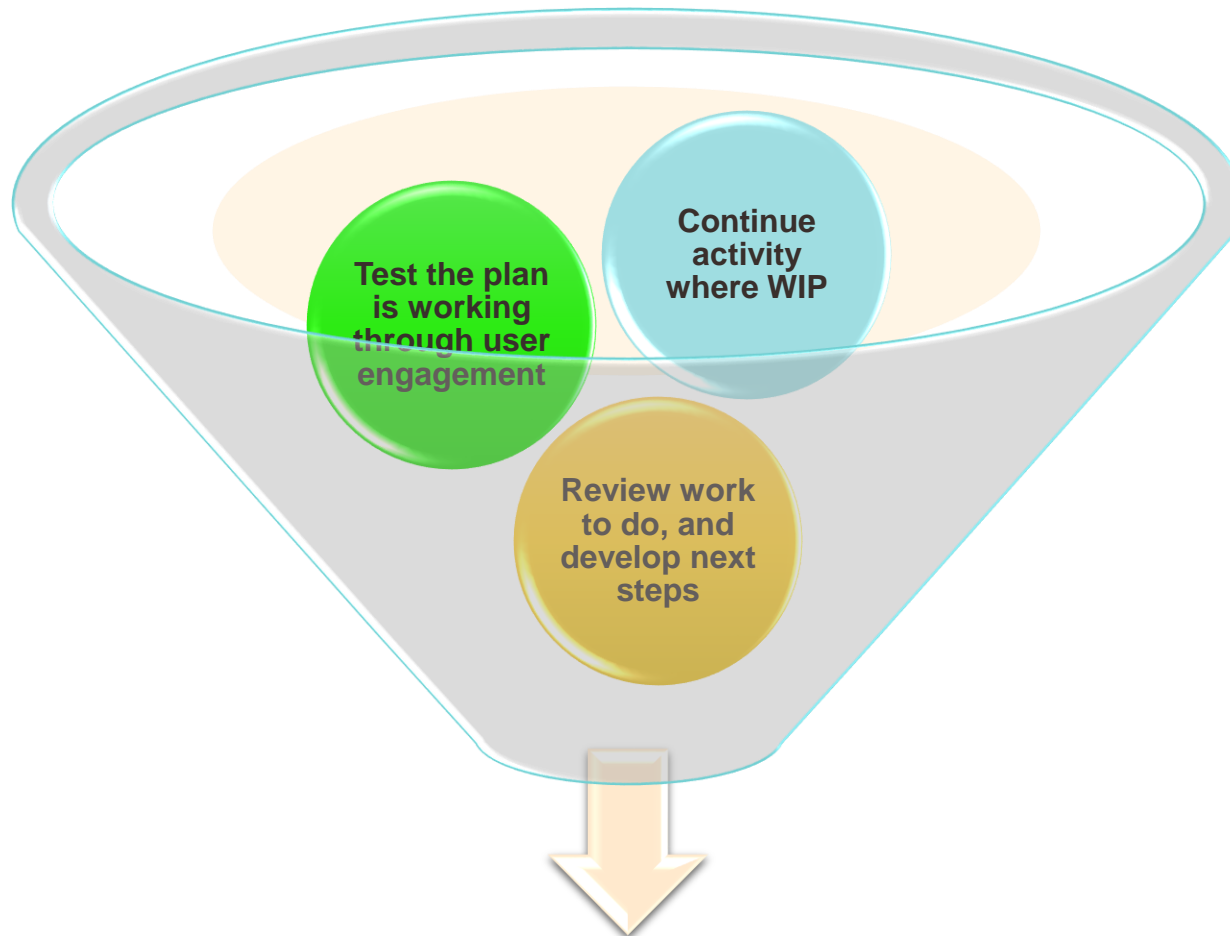
Being  
healthy and  
safe

Key focus for this priority has been to support people to remain safe during the pandemic.

New developments against the plan include avoiding admissions to locked hospitals and out of county inpatient facilities through a shared Complex Needs framework



# What Next...



**Continual improvement and development of plans to support the priorities**



# Any Questions?

