

# ***Launching the new Herefordshire Agreed Syllabus for RE***

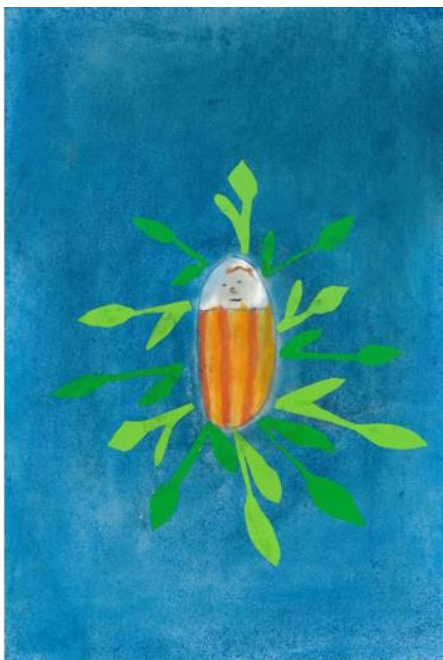
*Excellent, essential  
CPD - a balance of  
practical ideas and  
inspiration*

*With  
Fiona Moss  
Stephen Pett*

***Making good progress  
in RE: belief, impact,  
connections***

*It is the duty of a local authority to review its agreed syllabus for RE every five years. After consultation with teachers, Herefordshire SACRE have opted for a new syllabus that builds on the 2015 model but with a more systematic approach, studying religions separately before comparing – part of a spiral curriculum to embed learning in pupils' long-term memory. The new syllabus offers strong support for coherent curriculum planning and day to day classroom teaching.*

**Friday  
5<sup>th</sup> June  
2020**



## **Venue:**

*The Bishop of Hereford's Bluecoat School  
Hampton Dene Road  
Tupsley  
Hereford HR1 1UU*

**Fee**

**£50**

**Or £80 for two teachers  
from the same school**

***Making good progress in RE: belief, impact, connections***  
***Friday 5<sup>th</sup> June The Bishop of Hereford's Bluecoat School, HR1 1UU***  
**9.30am-3.30pm**  
(Registration and refreshments from 8.45am)

This will be a practical conference to launch the revised Herefordshire Agreed Syllabus for RE. It will provide an opportunity to explore how the syllabus helps teachers in planning and delivering creative and effective RE. Sessions will set the wider context for RE and provide inspiring ideas for the classroom, supporting planning of imaginative RE lessons. There will be plenty of resources and ideas to take away and use in the classroom.

8.45am Registration: 9.30 Start

**Session 1: Intentions of RE: planning great RE using the new syllabus**

This session will consider the place and value of RE for pupils, highlighting the developments and opportunities in the new syllabus. It will explore how to use the syllabus to plan and teach engaging, thoughtful RE.

**Session 2: Implementing good RE: excellent teaching and learning**

This session will offer examples of excellent teaching and learning ideas, based on the syllabus, with a focus on inspiring learning.

**Session 3: The impact of RE: achieving more in RE**

This session will explore more teaching and learning ideas, connecting them with methods of assessment, providing examples of ways to enable pupils to make good progress in RE.

3.30 Evaluations and close

*Primary and secondary meet together for the morning. Secondary teachers will split from the group around 12.15 to focus on specific resources for KS3.*

You will receive a hard copy of the syllabus on the day, along with copies of all resources used on the day. Electronic copies available to download afterwards. A range of resources will be available to purchase or order on the day, including units of work that support the syllabus.

**Who is it for?**

The conference is aimed at teachers of RE from primary, secondary and special schools, including subject leaders and head teachers. It will be valuable for Governors to find out about and explore best practice in RE.

**Aims:**

- To introduce the revised Herefordshire Agreed Syllabus for RE, with its increased clarity, rigour and inspiring support materials
- To provide practical support and guidance to schools in planning creative, challenging, thoughtful RE to increase pupils' knowledge and understanding, as well as their personal development
- To give teachers confidence when planning and delivering great RE, and in dealing with core concepts in religions, deepening subject knowledge and skills in RE
- To model examples of thoughtful RE, challenging all pupils and promoting deeper thinking

**Venue:**

**The Bishop of Hereford's Bluecoat School, HR1 1UU**

**Fee: £50 or £80 for two teachers from the same school, including refreshments, lunch and resources**

Booking details attached.

**Booking form:**  
**Herefordshire Agreed Syllabus launch conference:**  
***Making good progress in RE: belief, impact, connections***  
**Friday 22<sup>nd</sup> May 2020**  
 Fee: £50 or £80 for two teachers from the same school

Full Name:			
School Name:			
School Address:			
	Postcode:		
Telephone:			
Email address:			
Special Dietary Requirements			
Payment details:			
<input type="checkbox"/>	Please invoice the school		
Invoice/ Credit Card billing address:			
	Postcode:		
<input type="checkbox"/>	I enclose a cheque, payable to RE Today Services		
<input type="checkbox"/>	I will pay by Visa, Mastercard or Switch		
Card number:			
Expiry Date:		Start Date:	
Security code <small>(last 3 numbers on signature strip)</small>		Issue no. (Switch)	
Signature:			
Date:			

**Send to:** RE Today Services, 5/6 Imperial Court, 12 Sovereign Road, Birmingham, B30 3FH  
 Tel: 0121 458 3313 Fax: 0121 285 1816  
**Email to:** [mark@retoday.org.uk](mailto:mark@retoday.org.uk)