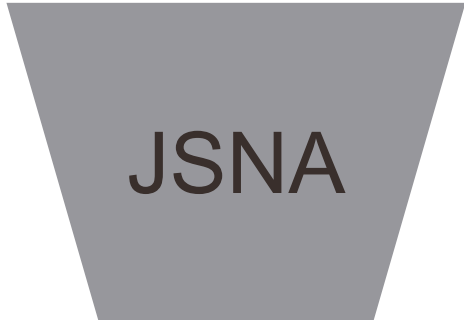


**Health and Wellbeing
Board
Appendix One**



Herefordshire HWBB
set strategic wellbeing
priorities for the
Herefordshire system

H&W
NHS Long-Term Plan

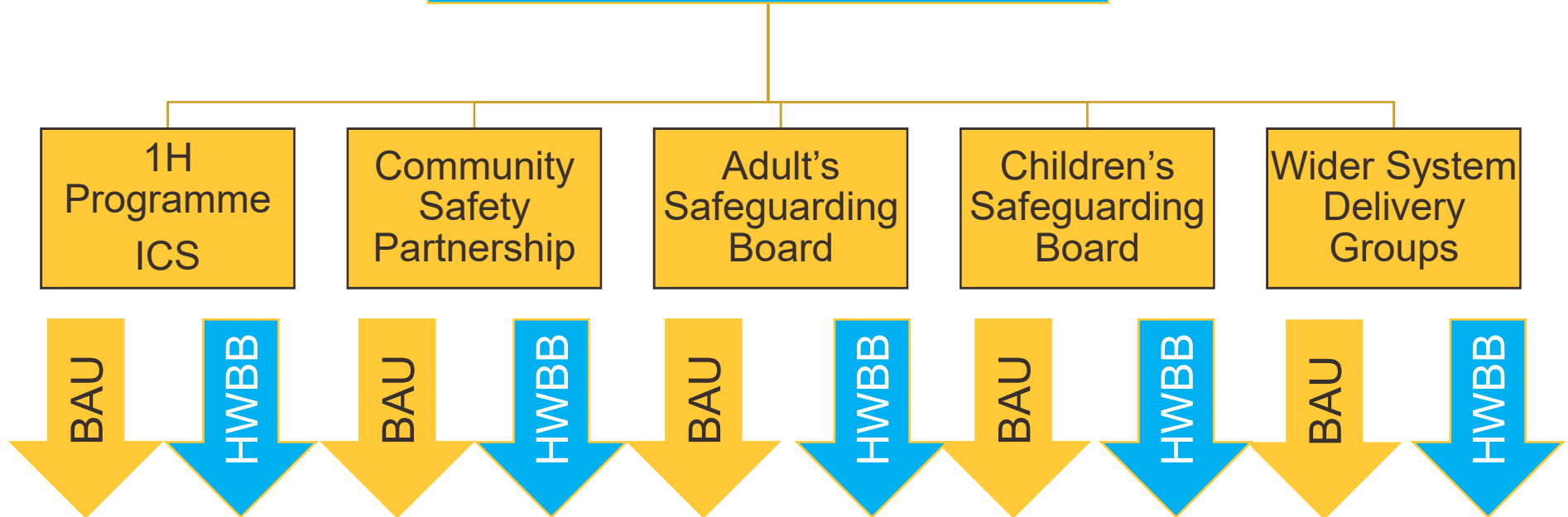
Herefordshire Council
Corporate Plan

Wider partnership
groups, business as
usual associated with
strategy and delivery
plans



Focus on delivering system change

Health & Wellbeing Board
System Priorities



NHS Long Term Plan

Local people will live well in a supportive community with joined up care underpinned by specialist expertise and delivered in the best place by the most appropriate people

2019

A system too reliant on emergency access and beds where people believe that hospital is the best place to be when you are unwell

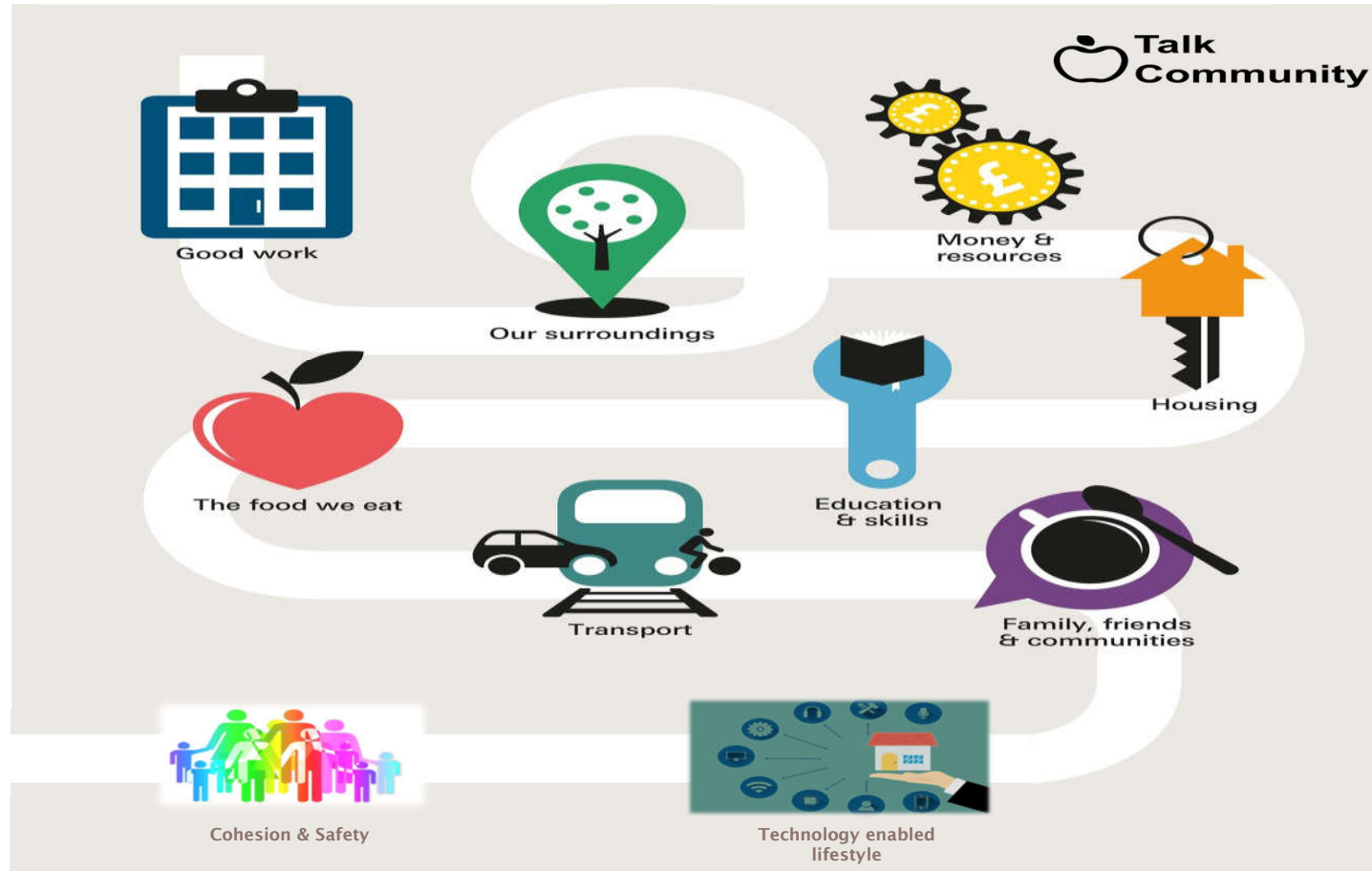
2024

A system built around excellent care close to home, where hospital beds are only used where somebody cannot be cared for safely in their own environment

Our 5 aims (The quintuple aim)
1. Improve health and well-being outcomes
2. Reduce health and care inequalities
3. Improve quality and performance enhancing the experience of care
4. Improve productivity and efficiency returning the system to financial sustainability
5. Sustain, develop and engage our workforce

Wellbeing – Everything is connected

As little as 10% of a populations health and wellbeing is linked to access to healthcare. We need to look at the bigger picture.....



Herefordshire Council

Corporate Ambition

Respecting the past, shaping our future – we will help build vibrant communities, create a thriving local economy and protect and enhance our environment

Community – Building communities to ensure everyone lives well and safely together

Economy – Support an economy which builds on the county's strengths and resources

Environment – Protect our environment and keep Herefordshire a great place to live