



Integrated Care Systems and One Herefordshire

Adult and Wellbeing Scrutiny Committee

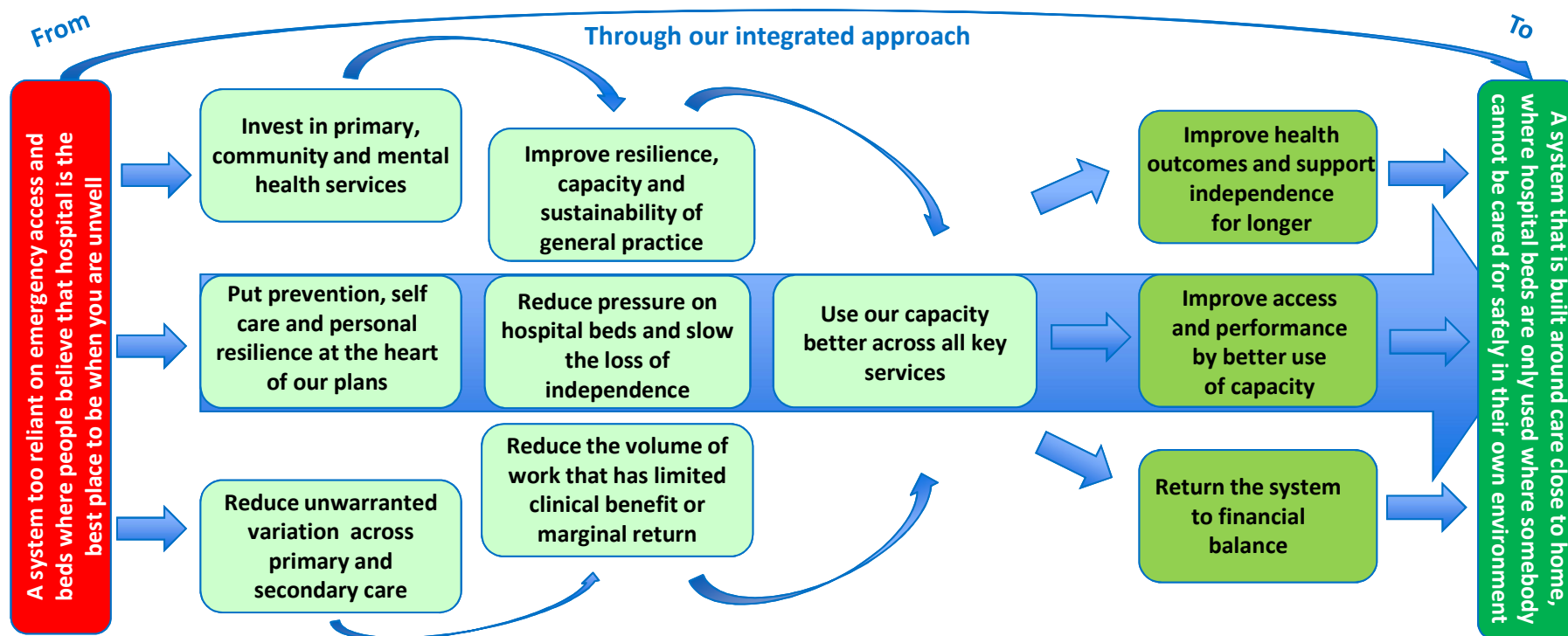
Integrated Care Systems (ICSs)

- Evolution of STPs - ICSs to cover the whole country by April 2021
 - ‘Commissioners will make shared decisions with providers on how to use resources, design services and improve population health’*
- Streamlined commissioning arrangements:
 - typically involving a single CCG for each ICS/STP area
 - CCGs will become leaner, more strategic organisation
 - CCGs will support providers to partner with local government and other organisations on population health, inequalities and service redesign.
- Funding flows and contract reform will support the move to ICSs
 - Local alliance contracts or giving one provider lead responsibility
- Full review of the Better Care Fund concluding in early 2019



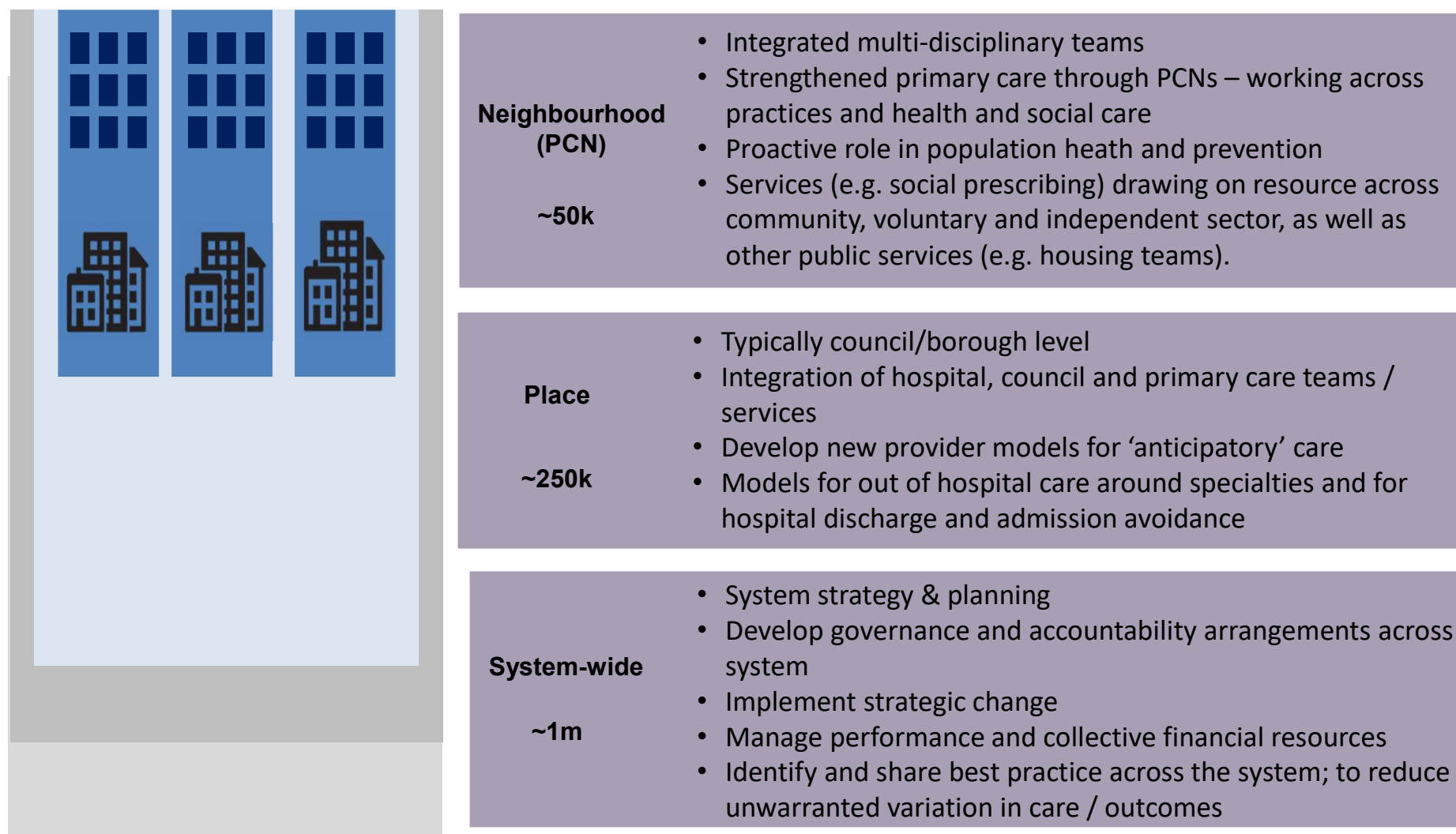
H&W STP Vision

“Local people will live well in a supportive community with joined up care underpinned by specialist expertise and delivered in the best place by the most appropriate people”



(Work In Progress)

The Tiers in an ICS



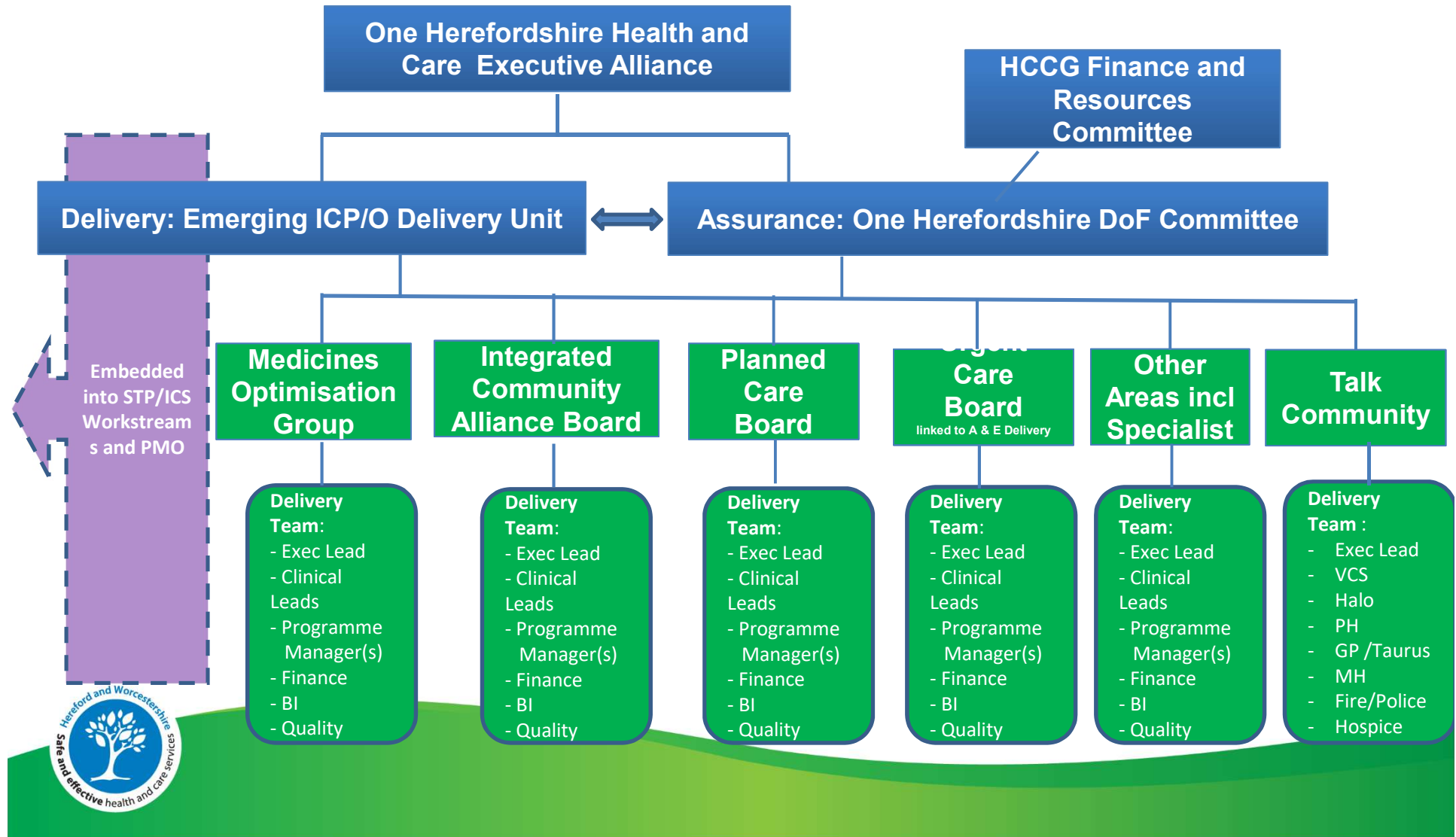
One Herefordshire

- Our 'Place Based' Integration Plan – within the Herefordshire and Worcestershire ICS
- Herefordshire Partners 'Whole System Plan'
- Functional Integration:
 - Integrating at the point of delivery
 - Looking for shared efficiencies
 - Not about Shifting Risk
- This is a 5 Year Plan





2019/20 Delivery and Assurance



Scrutiny Focus Session

A focus on wider wellbeing and prevention – the work of:

- *Talk Community*
- *Integrated primary and community services*
- *Urgent care*



Talk Community Key Programmes

Talk Community will be implemented through detailed plans in six key areas;

- ☐ Talk Community Hubs
- ☐ The Commissioning approach
- ☐ Talk Community Business
- ☐ Talk Community Safety & Cohesion
- ☐ Talk Community public health
- ☐ Operational developments



Integrated Care Alliance Board Work Plan

Project	Lead Organisation
Development of locality Management Teams	Taurus/WVT
Development Support	Taurus
Primary Care Network Development	Taurus
Integrated HF team	Herefordshire Council
Integrated Out of Hours	WVT/Taurus
Integrated Discharge team	Herefordshire Council
High Intensity User	System approach
End of Life dementia pathway	CCG
Discharge to assess	Herefordshire Council
Integrated Psychological therapies	CCG
Community bed right sizing	CCG
BI and KPI	Taurus and system approach



Accident and Emergency Board

Overarching Programme	Projects for delivery
Hospital projects	Ambulance response and conveyances
	Pharmacy and GP access to data systems
	Reviewing Directory of Service (DOS)
Integrated Urgent Care	Out of House Primary Care
	Summary Care Record
	EMIS Access
Emergency Department	Frailty Front Door
	Ambulance handover
Hospital Bed Based	Red2Green
	7 day services
	Stranded and super stranded review of patients
Patient Discharge	Out of county delays
	DToC reduction
	Joined up advanced care planning RESPECT



The Better Care Fund

- BCF and Integration plan 2019/20 approved and refreshed last year
- Could be changes for 2020/21 depending on review
- Key deliverables and schemes:
 - Integrated hospital function
 - Alignment of Homefirst and Hospital at Home
 - Integrated care home quality team
 - Digital solution for integrated working
 - Increased funding in urgent care and care home market



Achievements to Date

- Delayed Transfer of Care system improvement
- Increased number of people supported at home rather than community hospital facility
- Implemented a Discharge to Assess facility
- Front door frailty team supported improvement of flow at the front door
- Integrated discharge function
- Developments of Talk Community hubs



Questions?

