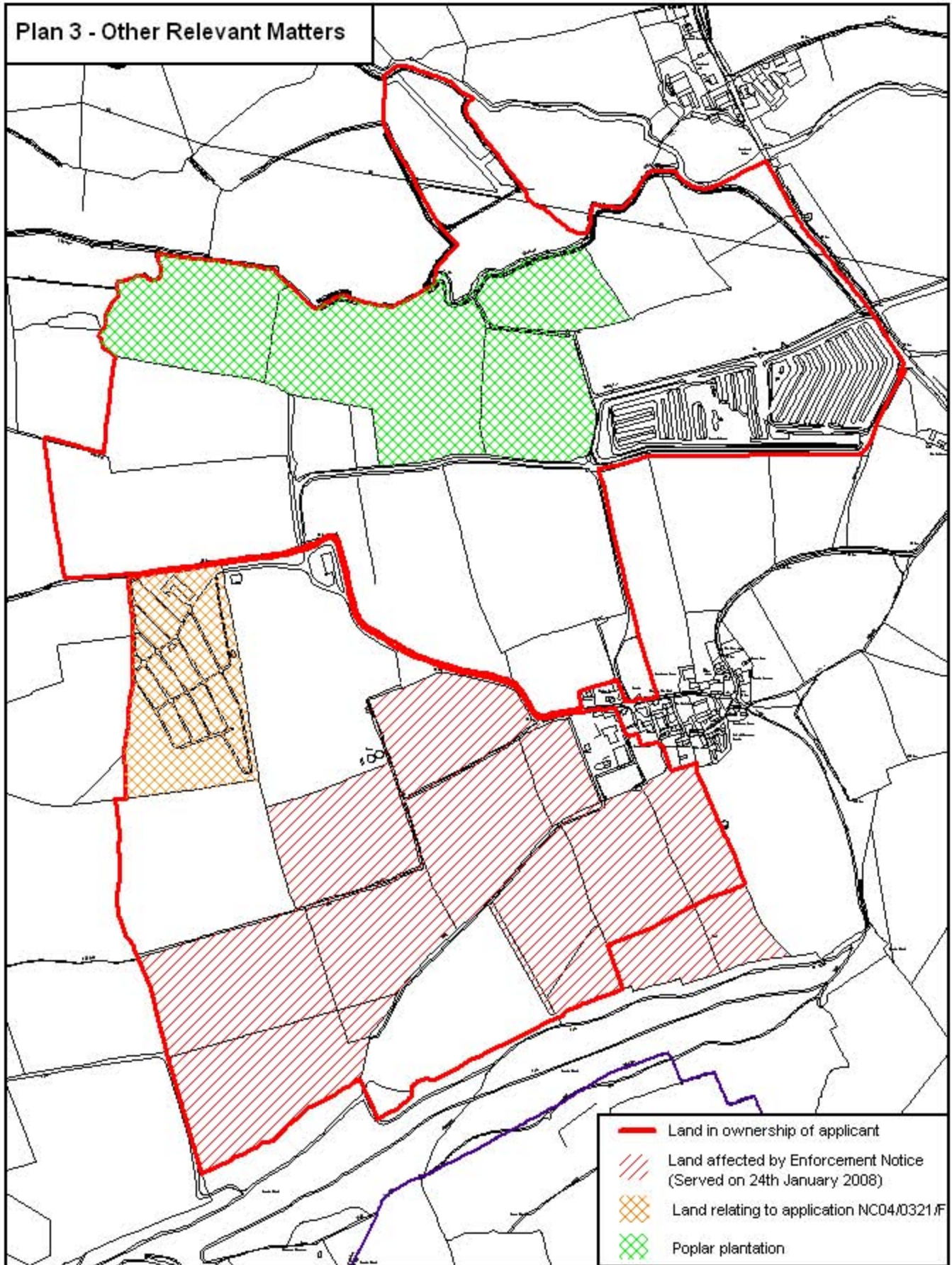


Plan 3 - Other Relevant Matters



- Land in ownership of applicant
- Land affected by Enforcement Notice (Served on 24th January 2008)
- Land relating to application NC04/0321/F
- Poplar plantation



Brierley Court Farm
DCNC2009/0167/F

Scale 1: 10,000



Herefordshire Council ICT Services Division,
Tlax Office Centre, Holme Lacy Road,
Rothley, Hereford, HR2 6JT.
Tel: 01432 250160
Email: icpdesk@herefordshire.gov.uk

© Crown copyright. All rights reserved. 100024168. (2008)
© Getmapping plc. www.getmapping.com