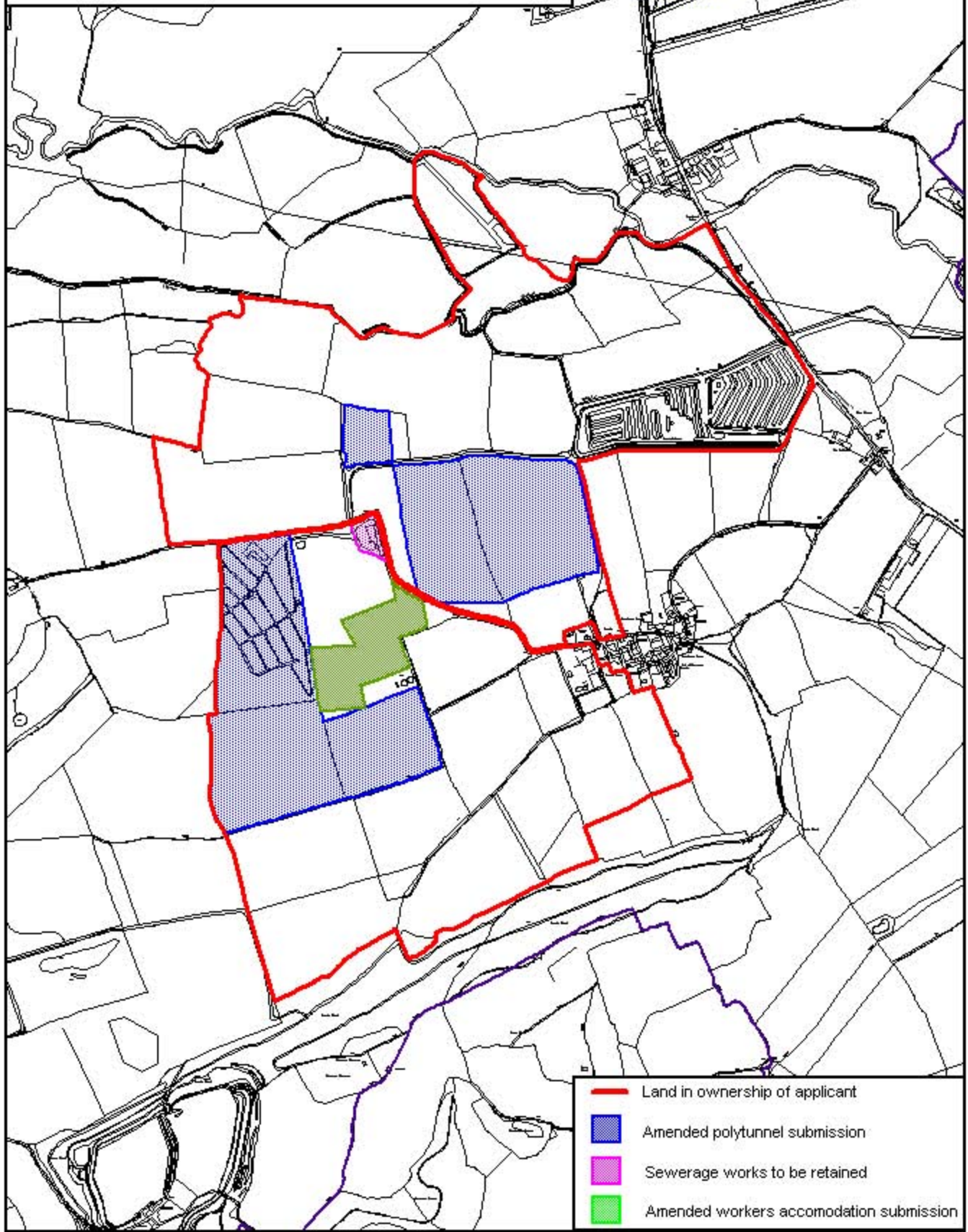






Plan 2 - Amended Schemes at 14th August 2009

Leominster



-  Land in ownership of applicant
-  Amended polytunnel submission
-  Sewerage works to be retained
-  Amended workers accomodation submission



**Brierley Court Farm**  
**DCNC2009/0167/F**

Scale 1: 10,000



Herefordshire Council ICT Services Division,  
Tlora Office Centre, Holme Lacy Road,  
Rothley, Hereford, HR2 6JT.  
Tel: 01432 250160  
Email: [icpdesk@herefordshire.gov.uk](mailto:icpdesk@herefordshire.gov.uk)

© Crown copyright. All rights reserved. 100024168. (2008)  
© Getmapping plc. [www.getmapping.com](http://www.getmapping.com)