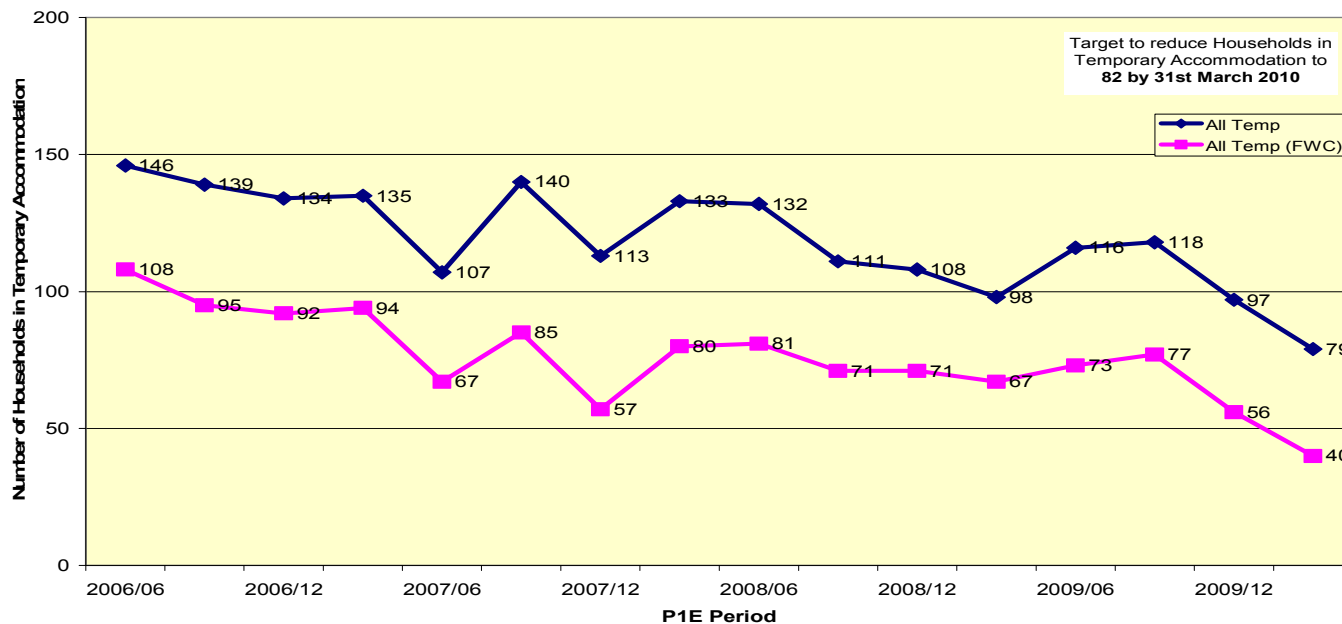
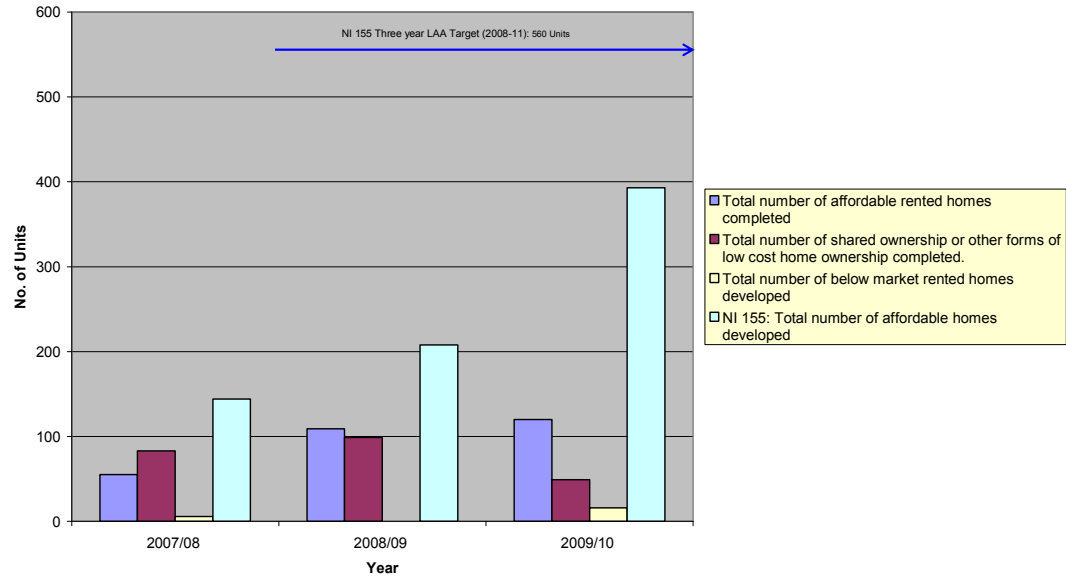


Indicator Reference	Definition	Measured in	Hfds Out-turn 06/07	Hfds Out-turn 07/08	Hfds Out-turn 08/09	End of Year Status 08/09	Target 09/10	Q1 09/10	Q2 09/10	Q3 09/10	Q4 09/10	End of Year Outturn	End of Year Status	DoT
NI 155	Number of affordable homes delivered (gross)	Number (Cumulative)		141	208	B	182	44	44	68	29	185	B	↓
NI 156	Number of households living in temporary accommodation	Number (Snapshot)	135	133	98	B	82	116	118	97	73	79	B	↑
NI 187	Tackling Fuel poverty -% of people receiving income based benefits living in homes with low energy efficiency rating	Percentage			SAP <35 = 28.9% SAP >65 = 20.98%	G	SAP <35 = 27.4% SAP >65 = 28.9%					SAP <35 = 58 (14%) SAP >65 = 160 (40%)	G	↑
LPI 2	Number of private sector vacant properties returned to occupation or demolished as a result of LA Actions	Number (Cumulative)	52	115	153	G	120	38	48	144	33	177	G	↑
LPI 6	No. of Households who considered themselves as Homeless, for whom casework resolved their situation	Number (per thousand households)	3.12	3.95	4.4	G	4	1.2	1.04	1.96	2.03	6.23	G	↑
Links to NI 156	To reduce the number of households living in temporary accommodation by 50% by 2010	Number (Snapshot)	135	133	98	B	82	116	118	97	73	79	B	↑

Analysis of Households in Temporary Accommodation



Affordable Housing Provision



Homelessness Prevented/Relieved

