

Herefordshire Council General Scrutiny Committee
Review of
Highway and Related Services
as delivered through
The Public Realm Services Contract
with
Balfour Beatty Living Places

A Strategic Overview
29 January 2018

A Strategic Overview

- **Creating the Environment for Change**
- **Defects - Enabling a Risk Based Approach**
- **Community – Locality Working**
- **Continuous Improvement in Value for Money**

Creating the Environment for Change

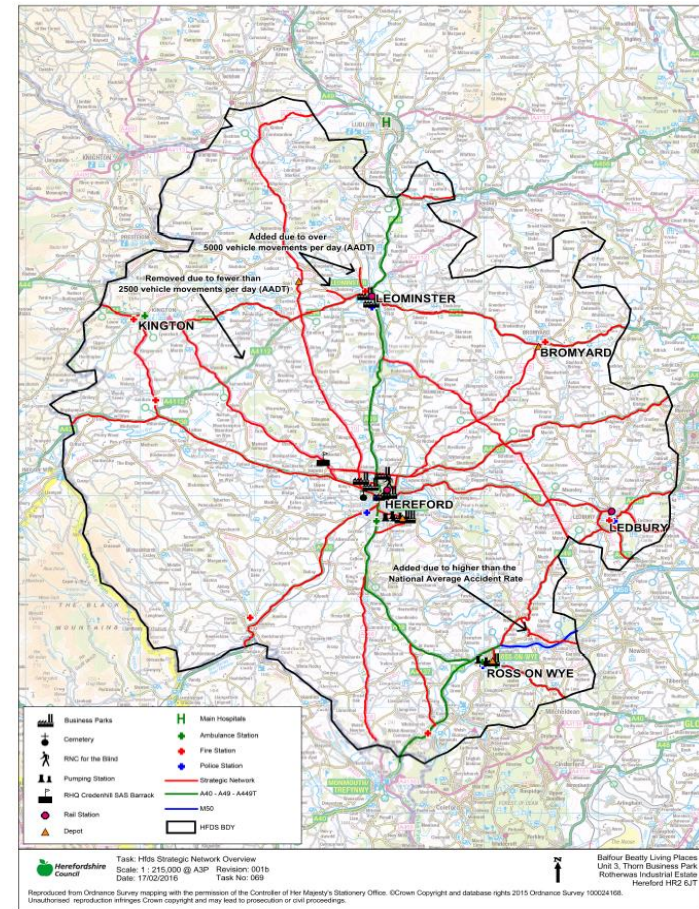
Creating the environment for change

Our Asset Management Strategy is set out in the LTP. The network is comprised of 3 parts

Vision for Herefordshire:

A place where people, organisations and businesses work together within an outstanding natural environment, bringing about sustainable prosperity and wellbeing for all.

- Strategic Network (including the Resilience Network)
- General Network
- Low Priority Network



Creating the environment for change

The Asset Management Strategy is also set out in the Local Transport Plan

The Highway Asset Management Strategy for Herefordshire's Roads

1. Major Investment
2. Sustained Investment
3. Reduce the need for reactive 'temporary' pothole repairs
4. Shift our routine resources further towards preventative activities
5. Provide the support that enables routine maintenance work to be delivered locally



Sustaining Investment – Challenge Fund

Sustaining Investment Through Successful Bids to Government

Returning three strategically important routes to good condition throughout

- £8M Investment (£5M DfT, £3M Council)
- Supports economic growth in the county by investing in the 3 strategic A roads (A4103, A465 & A438) leading to Herefordshire's Enterprise Zone
- 25 miles of resurfacing 12 miles of surface dressing - improved road condition and improved safety
- Delivering quality treatments maximises improvement in road condition reducing future costs and disruption for all

Herefordshire Council

Hereford is changing...

There's a lot of work on Herefordshire's roads that can make it tricky and frustrating to get around. But there is light at the end of the tunnel. The City Link Road will open at the end of the year, which will make driving around Hereford quicker and easier and funding from Government has meant we can resurface some of the busiest roads across the county. This is the biggest investment we've been able to make for over twenty years. Cycle, walk or take the bus if possible if you're travelling around the city and allow a little extra time to get around Herefordshire. You can check where the latest works are that might affect your journey on the council's website and social media feeds. We'll be off the city centre roads in December in time for the Christmas shopping period.

Information supplied by Balfour Beatty Living Places
Schedule correct at time of print

Road works timeline October-November

Roads open at weekend unless indicated otherwise

A4103 Worcester road

- 9 - 27 October A4103 Fromes Hill
Closure: 8am-6am with diversions
- 31 October - 3 November A4103 Lower Eggleton to Upper Eggleton
Traffic convey in place: 9am-5pm

A438 Brecon road

- 25 - 30 October A438 near the Rhyspence Inn
Closure: 8.45am-5pm
- 31 October - 3 November A438 near Stowe Farm
Closure: 8.45am-5pm
- 6 - 9 November A438 Winforton towards Stowe Farm
Closure: 8.45am-5pm
- 9 - 15 November A438 Winforton Village
Closure: 8.45am-5pm
- 16 & 17 November A438 Bridge Sollars
Closure: 8.45am-5pm
- 14 - 17 November A438 Huntington Lane to A480 Junction (Credenhill Road)
Traffic convey in place: 6pm-1am

A465 Abergavenny road

- 24 - 27 October near Cobham Common track junction
Closure: 8am-6am
- 30 October - 1 November A465 Willax Bridge
Traffic convey in place: 8am-6pm
- 2 - 13 November A465 Tesco Roundabout (Belmont) to Clehonger
Traffic convey in place: 9am-4.45pm

A49

- 22-27 October A49 Edgar Street (Prior Street junction) to The Courtyard
Night time closure: 6pm-6am with a diversion in place
- Until 30 November A49 Newtown roundabout
Southbound lane closure for lane widening with a diversion in place (including weekends)
- 23 October - 11 November A49 Starting Gate to Priory Place
Highways England closure: 8am-6am for street lightings and white lining works

For all county road works, visit: herefordshire.gov.uk/roads

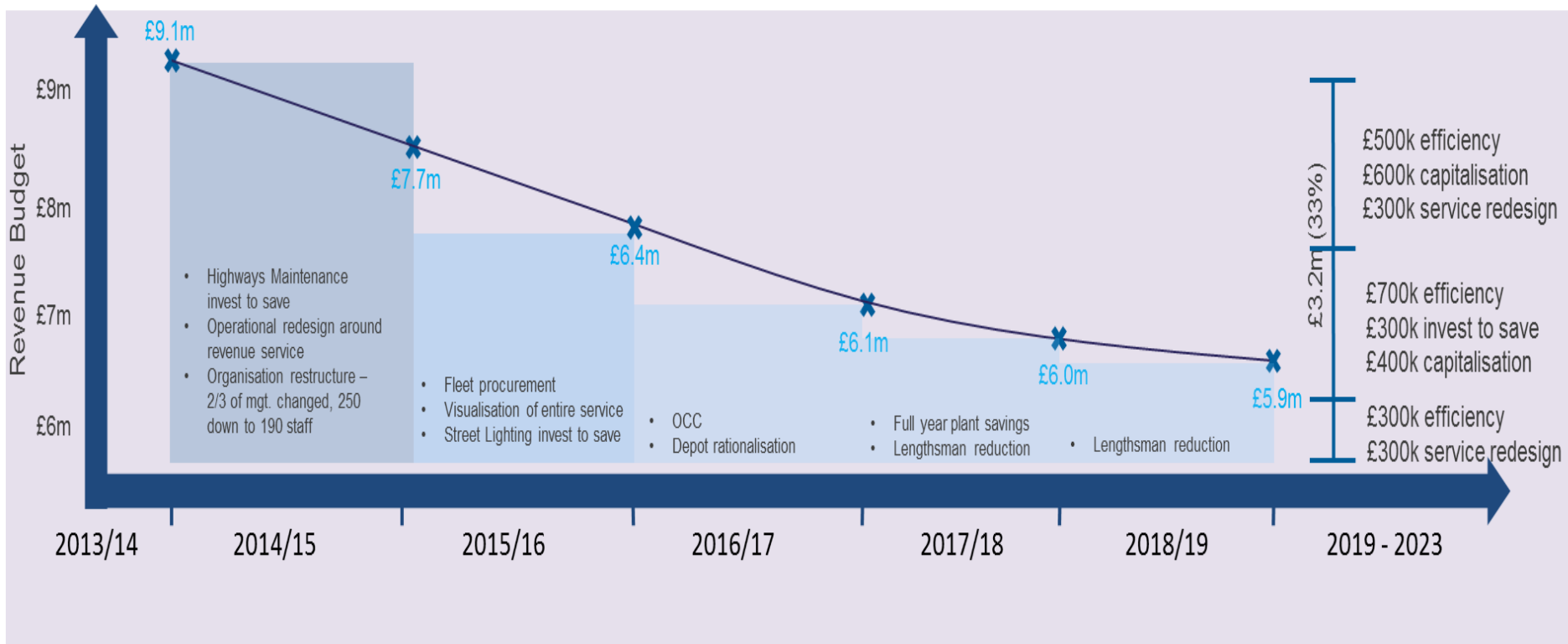
hfdscouncil

BUSINESSES OPEN AS USUAL

A Journey to Efficiency

A Change Journey Focused on Efficient Delivery and Cost Reduction

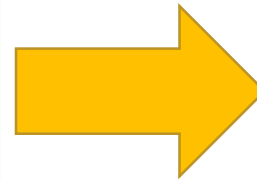
The first three years of the contract term have been focused on developing an efficient service and delivering a significant capital injection to the asset



Enabling a Risk Based Approach to Defects

Enabling a Risk Based Approach to Defects

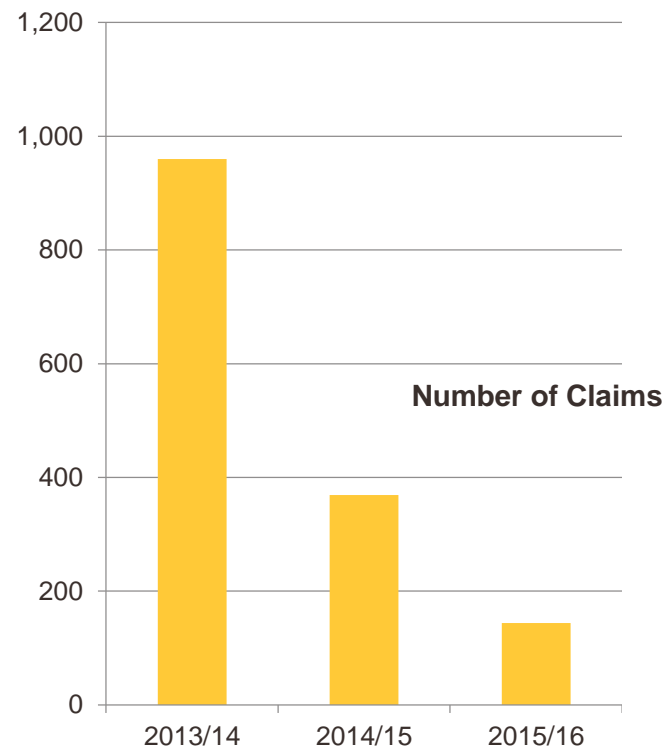
High Level Principles for the Risk Based Approach to Safety Inspections and Defect Response times. So LHAs can develop their highway safety inspection policies and practices with a view to ensuring that highway users experience an appropriately consistent approach to highway safety inspection and maintenance.



Defects – Consequence of Change

Consequence

- Transition to a preventative maintenance strategy
- Should see fewer potholes develop into an issue for highway users
- Move to a first fix preventative
- Sound defence against highway claims



Community – Locality Working

Community – Working directly with the community

Understanding the Needs of the Community, Enabling Local Delivery

2 Community development & stakeholder management

Providing high quality customer and stakeholder interaction through open and honest communication and by working with communities enabling them to take responsibility for local issues

Balfour Beatty **Herefordshire Council**

Herefordshire Council

Balfour Beatty Living Places

BALFP COMMUNITY STRATEGY AT A GLANCE

Team of **13** LOCALITY STEWARD AREAS

$\{ \text{Phone} + \text{Email} \} \times 10,000 =$ The number of requests for service

Monthly Quarterly Annually

The frequency of highly responsive requests for local byre, litter and dog waste

12,000+

100+

Local community sites to projects

Balfour Beatty Living Places

What we do in Herefordshire

Balfour Beatty **Herefordshire Council**

Working for Herefordshire

TRAFFIC REGULATION ORDERS APPLICATION TOOLKIT

HEREFORDSHIRE TRAFFIC MANAGEMENT

1. Introduction
2. Do the Highway & Road
3. Looking After the Road
4. Roadside Signs
5. Transport & Safety
6. Health & Safety
7. Making Contact

Continuous Improvement in Value for Money

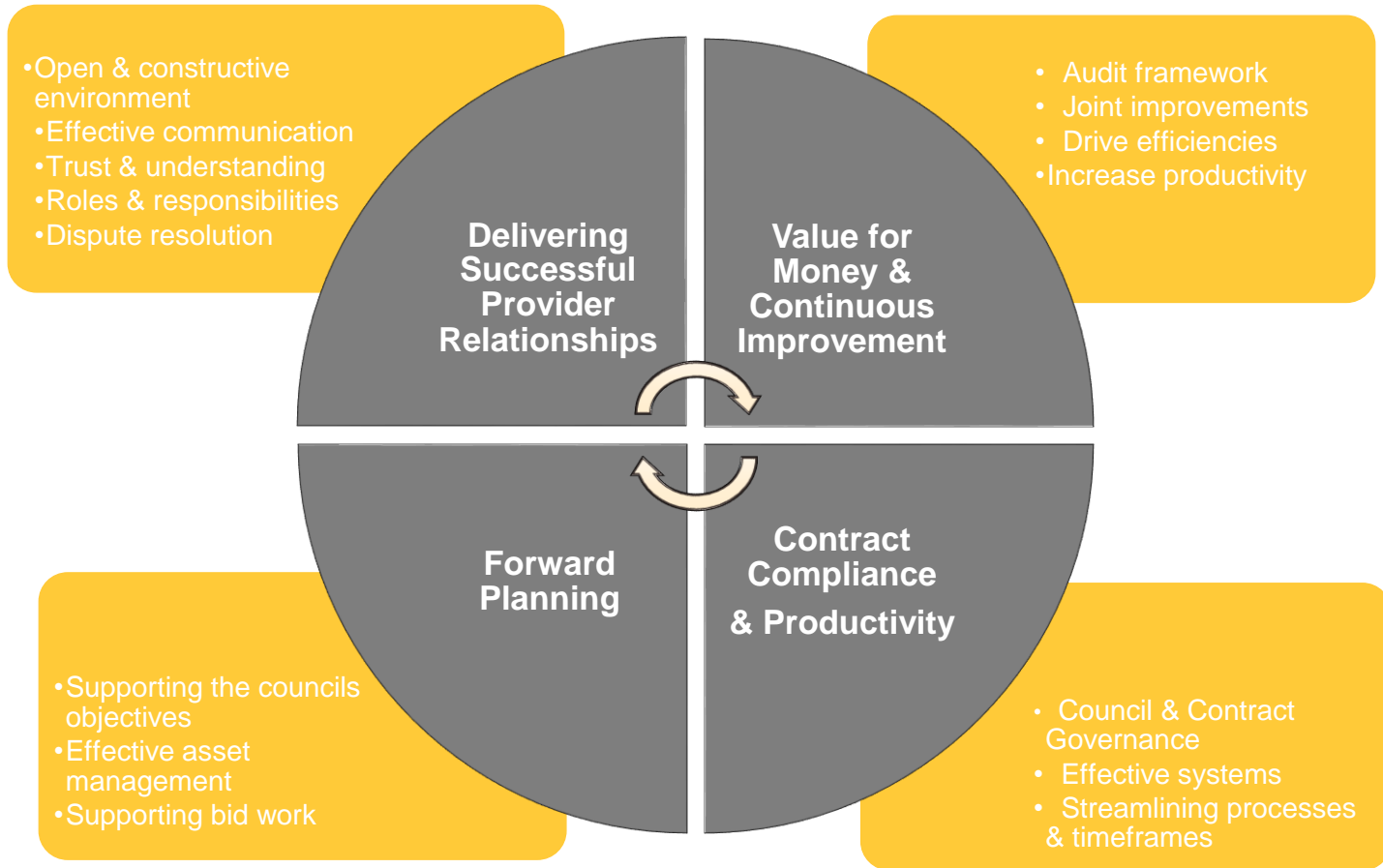
Continuous Improvement in Value for Money



Contract Term

How Potential Extension Incentivises Performance

Contract Management Objectives

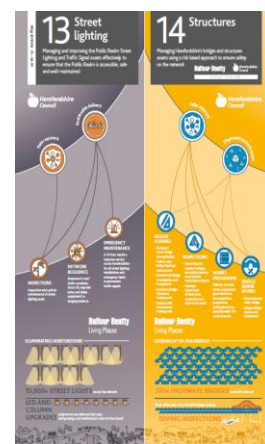
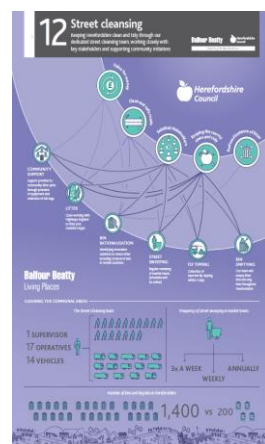
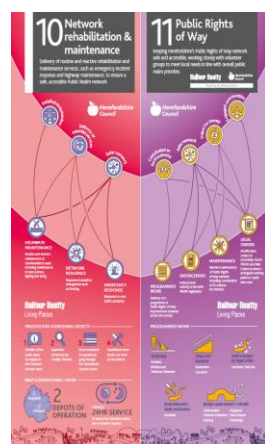
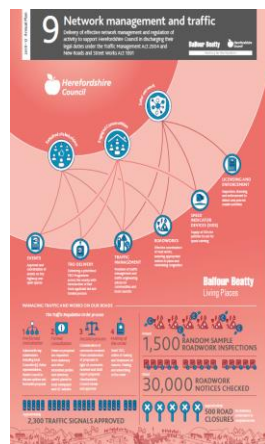
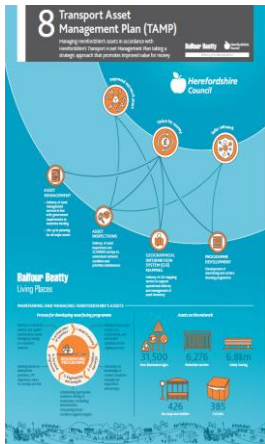
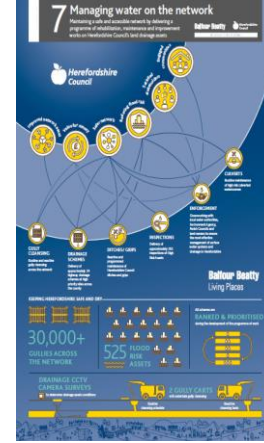
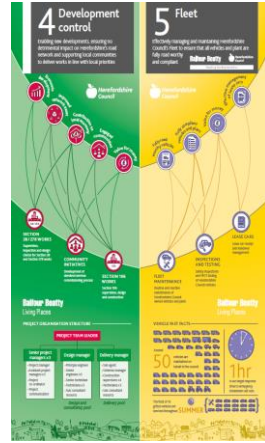
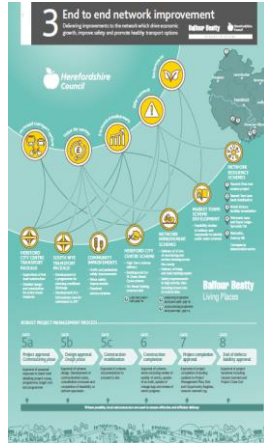
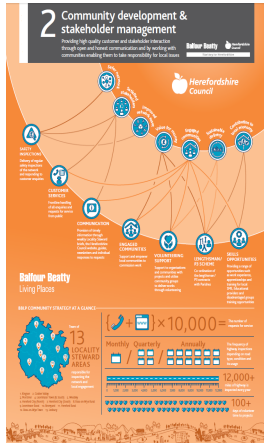
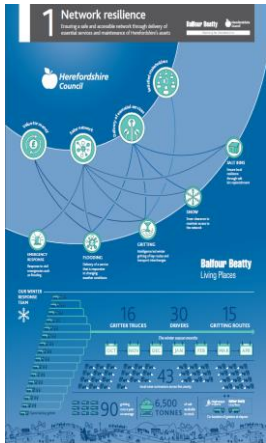


Herefordshire Council General Scrutiny Committee
Review of
Highway and Related Services
as delivered through
The Public Realm Services Contract
with
Balfour Beatty Living Places

The Annual Plan
29 January 2018

The Annual Plan 2018/19

Maintaining and Investing in the Public Realm



Developing the Plan 2018/19

